



Toll Free US & Canada: **800-645-8180**

**Eastern Division**

60 Fleetwood Ct., Ronkonkoma, NY 11779-6907  
Telephone: (631) 471-3300 Fax: (631) 471-3308

**Western Division**

1219 W. Mahalo Place, Rancho Dominguez, CA 90220-5446  
Telephone : (310) 632-5400 Fax: (310) 632-3900

*Supplying the Aerospace, Defense & Metal Working Industries Since 1951!*

**Minimum Order**

\$100.00 List Price

**Terms**

Net 30 days on approved credit only.  
Approved credit cards.  
Prepaid via check or wire transfer.

**No C.O.D. shipments.**

**Returns**

Return authorization is required.  
Merchandise must be sent freight prepaid to the facility from which it was purchased.  
A 20% restocking charge is applicable.

**All claims must be made within 7 days of receipt of goods.**

**Freight**

F.O.B. shipping point.

**Special Orders**

All special orders may require prepayment.

**Currency**

All prices are in US dollars.

**Overseas Customer Terms**

Same as above, only **prepayment via bank wire transfer (all fees for buyers account) or by bank check.**

US Air Tool Company (also known as USATCO) has been a family owned and operated business since 1951. We are now a US manufacturer and worldwide distributor of high quality tools for the aviation industry with offices in New York & California. In addition, from the beginning of the homebuilder era in the 1970's, USATCO has been providing tools and equipment to craftsmen around the world who build and fly their own aircraft. These "sheet-metal artists" are now flying thousands of planes built and maintained with USATCO tools.

USATCO offers the highest quality products at competitive prices, with the knowledge and experience necessary for expert advice in product selection. Our courteous staff will be pleased to assist you. And of course, all the products we offer are fully guaranteed. If you don't see what you are looking for, please don't hesitate to contact us. We work hard to provide our customers with straightforward & reliable business. Try us & see!

**USATCO.com**

Don't forget to check out USATCO Online, with monthly sales, homebuilder specials, surplus items & an easy to use interface its a great place to shop for tools on the web. **www.USATCO.com**

**Government IMPAC Cards Accepted**

**USATCO Tool Repair**

We repair all major brand pneumatic tools on our premises. We are an official repair station for Cherry Textron<sup>®</sup>, Chicago Pneumatic<sup>®</sup>, and Cooper<sup>®</sup> Power Tools (including Dotco<sup>®</sup>, Gardener Denver<sup>®</sup>, Buckeye<sup>®</sup> and Doler<sup>®</sup>). In addition, we have our own manufacturing and modification facilities. We are riveting and product assembly specialists!

We will be happy to examine your tools free of charge and give you an estimate of repair cost. Ship prepaid to any of our facilities. Please send tensiometers to our New York Lab only.

**Please ask about our tool rental policy!**

**Limited Warranty**

*If for any reason you are not completely satisfied with any item purchased from us you may request a return authorization within seven (7) days of receipt of goods. When obtained, send us the item (transportation prepaid) for replacement, repair or refund. Tools manufactured by USATCO are warrantied for one (1) year from date of purchase. We cannot assume liability for abuse, misuse or alteration of goods. Any tampering with tools or attempted repairs of same will nullify this warranty. Warranties from other manufacturers available upon request.*

## Chicago Pneumatic® Mini Air Drills

*Reversible Model  
Now Available*



CP7300R

- An incredibly compact & lightweight general purpose tool.
- Planetary gearing with brass bushings.
- Includes Jacobs 1/4" keyed chuck.
- Economically priced.

### 1/4" Capacity - 0.25 hp (0.19 kW) - Non-Reversible

Part Number	Free RPM	Overall Length	Weight
CP7300	2800	5" (127 mm)	1.35 lbs (0.6 kgs)

### 1/4" Capacity - 0.25 hp (0.19 kW) - Reversible

Part Number	Free RPM	Overall Length	Weight
CP7300R	2700	6-1/4" (157 mm)	1.5 lbs (0.7 kgs)

## Sioux® Mini Air Drills



1410R

*New Ergonomic Housing*

- Teasing throttle for precise control.
- Includes 1/4" keyed chuck.

*Comfort Grip*

Note: 4300 & 6000 RPM models also available, please inquire.

### 1/4" Capacity - 0.33 hp (0.25 kW) - Non-Reversible

Part Number	Free RPM	Overall Length	Weight
1410	2600	6-1/4" (159 mm)	1.3 lbs (0.6 kgs)
DR1412	3600	6-1/4" (159 mm)	1.3 lbs (0.6 kgs)

### 1/4" Capacity - 0.2 hp (0.15 kW) - Reversible

Part Number	Free RPM	Overall Length	Weight
1410R	2000	6-1/4" (159 mm)	1.3 lbs (0.6 kgs)
1412R	2600	6-1/4" (159 mm)	1.3 lbs (0.6 kgs)

### Lever Grip

- Includes 1/4" keyed chuck.

*Comfort Grip &  
Hanging Loop*



1420

### 1/4" Capacity - 0.33 hp (0.25 kW) - Non-Reversible

Part Number	Free RPM	Overall Length	Weight
1420	2600	8" (203 mm)	1.2 lbs (0.5 kgs)
DR1422	3600	8" (203 mm)	1.2 lbs (0.5 kgs)

## Dynabrade® Air Drills

**NEW**

52936



*New Design For Enhanced Comfort*

- Ergonomic design & soft textured grip.
- Powerful high-torque air motor is ideal for industrial applications.
- Includes Jacobs Chuck.

Note: 3/8"-24 spindle thread.

### 1/4" Capacity - 0.4 hp (0.30 kW) - Non-Reversible

Part Number	Free RPM	Overall Length	Weight
52931	500	6-1/2" (164 mm)	2.4 lbs (1.1 kgs)
52932	1000	6-1/2" (164 mm)	2.4 lbs (1.1 kgs)
52933	2400	5-7/8" (149 mm)	1.8 lbs (0.8 kgs)
52934	3600	5-7/8" (149 mm)	1.8 lbs (0.8 kgs)
52935	5500	5-7/8" (149 mm)	1.8 lbs (0.8 kgs)
52936	20,000	5-7/8" (149 mm)	1.8 lbs (0.8 kgs)

### 3/8" Capacity - 0.4 hp (0.30 kW) - Non-Reversible

Part Number	Free RPM	Overall Length	Weight
52986	500	6-7/8" (176 mm)	2.6 lbs (1.2 kgs)
52987	1000	6-7/8" (176 mm)	2.6 lbs (1.2 kgs)

## Chicago Pneumatic® Air Drills

**NEW**

DR350-P20000-C8



- New composite pistol grip construction for enhanced operator comfort.
- Powered with a 0.5 HP oil-free "dryline" modular motor.
- Teasing throttle & integral exhaust.

\* Side handle included on these models.

### 5/16" Capacity - 0.5 hp (0.35 kW) - Non-Reversible

Part Number	RPM	Overall Length	Weight
DR350-P20000-C8	20,000	4-3/4" (120 mm)	1.4 lbs (0.6 kgs)
DR350-P4500-C8	4500	5-3/8" (136 mm)	1.4 lbs (0.6 kgs)
DR350-P3000-C8	3000	5-3/8" (136 mm)	1.4 lbs (0.6 kgs)

### 3/8" Capacity - 0.5 hp (0.35 kW) - Non-Reversible

Part Number	RPM	Overall Length	Weight
DR350-P1000-C10*	1000	6" (154 mm)	1.4 lbs (0.6 kgs)
DR350-P550-C10*	550	6" (154 mm)	1.7 lbs (0.8 kgs)

**Dotco® Ergonomic Air Drills**



14CFS93-38

- Dramatically redesigned ergonomics promote operator comfort.
- Perfect for tight quarters and cramped spaces.
- Includes keyed chuck.
- Other models & options available, please inquire.

1/4" Capacity - 0.4 hp (0.30 kW) - Non-Reversible			
Part Number	Free RPM	Overall Length	Weight
14CFS90-38	29,000	5-3/4" (146 mm)	1.5 lbs (0.7 kgs)
14CFS91-38	5200	5-3/4" (146 mm)	1.5 lbs (0.7 kgs)
14CFS92-38	3800	5-3/4" (146 mm)	1.5 lbs (0.7 kgs)
14CFS93-38	3200	5-3/4" (146 mm)	1.5 lbs (0.7 kgs)
14CFS94-38	2400	5-3/4" (146 mm)	1.6 lbs (0.7 kgs)
14CFS95-38	1000	6-7/8" (175 mm)	1.8 lbs (0.8 kgs)
14CFS96-38	700	6-7/8" (175 mm)	1.8 lbs (0.8 kgs)
14CFS97-38	600	6-7/8" (175 mm)	1.8 lbs (0.8 kgs)

1/4" Capacity - 0.6 hp (0.45 kW) - Non-Reversible			
Part Number	Free RPM	Overall Length	Weight
14CSL90-38	20,000	6-3/8" (160 mm)	2.1 lbs (1.0 kgs)
14CSL98-38	6000	6-3/8" (160 mm)	2.1 lbs (1.0 kgs)
14CSL91-38	5200	6-3/8" (160 mm)	2.1 lbs (1.0 kgs)
14CSL92-38	3200	6-3/8" (160 mm)	2.1 lbs (1.0 kgs)

1/4" Capacity - 0.9 hp (0.67 kW) - Non-Reversible			
Part Number	Free RPM	Overall Length	Weight
14CNL90-38	20,000	6-7/8" (173 mm)	2.2 lbs (1.0 kgs)
14CNL98-38	6000	6-7/8" (173 mm)	2.2 lbs (1.0 kgs)
14CNL91-38	5200	7-1/4" (183 mm)	2.4 lbs (1.1 kgs)
14CNL92-38	3200	7-1/4" (183 mm)	2.4 lbs (1.1 kgs)

3/8" Capacity - 0.6 hp (0.45 kW) - Non-Reversible			
Part Number	Free RPM	Overall Length	Weight
14CSL95-51	1300	8-1/8" (205 mm)	2.9 lbs (1.3 kgs)
14CSL97-51	500	8-1/8" (205 mm)	2.9 lbs (1.3 kgs)

3/8" Capacity - 0.9 hp (0.67 kW) - Non-Reversible			
Part Number	Free RPM	Overall Length	Weight
14CNL95-51	1300	8-5/8" (218 mm)	2.8 lbs (1.3 kgs)

1/2" Capacity - 0.9 hp (0.67 kW) - Non-Reversible			
Part Number	Free RPM	Overall Length	Weight
14CNL97-53	500	9-1/8" (231 mm)	3.5 lbs (1.6 kgs)

**Sioux® Aviation Air Drills**

**NEW**



**Precision Signature Series Drills**

- Lightweight aluminum housing with ergonomic handle & soft textured grip.
- Three planet gear system for increased life & load capacity.
- With teasing throttle & keyed chuck.

**Note:** Air Inlet 1/4" NPT. 3/8"-24 spindle thread.

1/4" Capacity - 0.6 hp (0.45 kW) - Non-Reversible			
Part Number	Free RPM	Overall Length	Weight
SDR6P26N2	2600	5-3/4" (146 mm)	2.1 lbs (0.95 kgs)

3/8" Capacity - 0.6 hp (0.45 kW) - Non-Reversible			
Part Number	Free RPM	Overall Length	Weight
SDR6P26N3	2600	6-1/4" (159 mm)	2.3 lbs (1.0 kgs)

**Dynabrade® Vacuum Air Drills**

**NEW**



52906

**Includes Conductive Hose & Cuffs To Shield Operator From Electrostatic Discharge (ESD)**

- Collapsible vacuum shroud compresses around drill bit as you work to effectively capture chips & debris.
- Pistol grip design with slow-speed startup trigger.
- High torque air motor - comfortable insulated tool grip.
- 1-1/4" dia. vacuum port connects to central vacuum systems.
- Includes shroud, hose, cuffs, 1/4" capacity chuck & key.

**Note:** Air Inlet 1/4" NPT - use 1/4" (6.4 mm) air hose. 3/8"-24 spindle thread.

1/4" Capacity - 0.4 hp (0.30 kW) - Non-Reversible			
Part Number	Free RPM	Overall Length	Weight
52903	500	10-1/2" (267 mm)	3.7 lbs (1.7 kgs)
52904	1000	10-1/2" (267 mm)	3.7 lbs (1.7 kgs)
52905	2400	10-1/2" (267 mm)	3.1 lbs (1.4 kgs)
52906	3600	10-1/2" (267 mm)	3.1 lbs (1.4 kgs)
52907	5500	10-1/2" (267 mm)	3.1 lbs (1.4 kgs)

**Dynabrade® Heavy-Duty Vacuum Air Drills**



No F.O.D.

53103

*Includes Conductive Hose & Cuffs To Shield Operator From Electrostatic Discharge (ESD)*

- Collapsible vacuum shroud compresses around drill bit as you work to effectively capture chips & debris.
- Pistol grip design with slow-speed startup trigger.
- High torque air motor - comfortable insulated tool grip.
- 1-1/4" dia. vacuum port connects to central vacuum systems.
- Includes shroud, hose, cuffs, drill chuck & key.

Note: Air Inlet 1/4" NPT - use 1/4" (6.4 mm) air hose. 1/2"-20 spindle thread.

3/8" Capacity - 0.7 hp (0.52 kW) - Non-Reversible			
Part Number	Free RPM	Overall Length	Weight
53103	3400	10-3/8" (264 mm)	4.0 lbs (1.8 kgs)
53104	4500	10-3/8" (264 mm)	4.0 lbs (1.8 kgs)
53105	950	12-1/4" (310 mm)	4.4 lbs (2.0 kgs)

1/2" Capacity - 0.7 hp (0.52 kW) - Non-Reversible			
Part Number	Free RPM	Overall Length	Weight
53106	950	12-1/4" (310 mm)	4.4 lbs (2.0 kgs)

**Sioux® Heavy-Duty 'Z-Handle' Drills**



Lever Start, Rear Exhaust

2S1310

Works quietly & effectively in limited access areas.

1/4" Capacity - 0.5 hp (0.37 kW) - Non-Reversible			
Part Number	Free RPM	Overall Length	Weight
2S1310	2200	7-3/4" (197 mm)	2.6 lbs (1.2 kgs)
2S1410	3200	7-3/4" (197 mm)	2.6 lbs (1.2 kgs)

**Dynabrade® Offset Vacuum Air Drill**



No F.O.D.

*Ideal For Rivet Work, Aluminum & Other Aviation Applications*

- Self-generating vacuum with 7° offset drill head.
- Trigger mechanism for easy one-hand operation.
- Vacuum shroud retracts to allow full view of work surface.
- Includes vacuum bag, 6' vacuum hose & 3/8" keyed chuck.

Note: Air Inlet 1/4" NPT - use 1/4" (6.4 mm) air hose. 3/8"-24 spindle thread.

3/8" Capacity - 0.4 hp (0.30 kW) - Non-Reversible			
Part Number	Free RPM	Overall Length	Weight
53200	3200	10-1/2" (267 mm)	3.2 lbs (1.5 kgs)

**Chicago Pneumatic® High Power Air Drills**



DR750-P20000-C8

- New composite pistol grip construction for enhanced operator comfort.
- Powered with a 1.0 HP oil-free "dryline" modular motor.
- Teasing throttle & integral exhaust system.

5/16" Capacity - 1.0 hp (0.75 kW) - Non-Reversible			
Part Number	RPM	Overall Length	Weight
DR750-P20000-C8	20,000	6" (154 mm)	2.4 lbs (1.1 kgs)
DR750-P6000-C8	6000	6" (154 mm)	2.4 lbs (1.1 kgs)
DR750-P4100-C8	4100	6" (154 mm)	2.4 lbs (1.1 kgs)

3/8" Capacity - 1.0 hp (0.75 kW) - Non-Reversible			
Part Number	RPM	Overall Length	Weight
DR750-P3300-C10	3300	6" (154 mm)	2.4 lbs (1.1 kgs)
DR750-P2700-C10	2700	6" (154 mm)	2.4 lbs (1.1 kgs)
DR750-P1300-C10	1300	7-1/4" (184 mm)	3.5 lbs (1.6 kgs)

1/2" Capacity - 1.0 hp (0.75 kW) - Non-Reversible			
Part Number	RPM	Overall Length	Weight
DR750-P400-C13	400	7-1/4" (184 mm)	3.5 lbs (1.6 kgs)

**Sioux® High Power Aviation Air Drills**

**NEW**



*Precision Signature Series Drills*

- Lightweight aluminum housing with ergonomic handle & soft textured grip.
- Three planet gear system for increased life & load capacity.
- With teasing throttle & keyed chuck.

**SDR10P25R3**

Note: Air Inlet 1/4" NPT. 3/8"-24 spindle thread except where noted.

**1/4" Capacity - 1.0 hp (0.75 kW) - Non-Reversible**

Part Number	Free RPM	Overall Length	Weight
<b>SDR10P60N2</b>	6000	7-5/8" (193 mm)	2.3 lbs (1.0 kgs)
<b>SDR10P40N2</b>	4000	7-5/8" (193 mm)	2.3 lbs (1.0 kgs)

**1/4" Capacity - 1.0 hp (0.75 kW) - Reversible**

Part Number	Free RPM	Overall Length	Weight
<b>SDR10P25R2</b>	2500	7-1/8" (181 mm)	2.4 lbs (1.1 kgs)

**3/8" Capacity - 1.0 hp (0.75 kW) - Non-Reversible**

Part Number	Free RPM	Overall Length	Weight
<b>SDR10P60N3</b>	6000	8-1/8" (206 mm)	2.5 lbs (1.1 kgs)
<b>SDR10P40N3</b>	4000	8-1/8" (206 mm)	2.5 lbs (1.1 kgs)
<b>SDR10P7N3*</b>	700	9-1/8" (231 mm)	2.9 lbs (1.3 kgs)
<b>SDR10P4N3*</b>	400	9-1/8" (231 mm)	2.9 lbs (1.3 kgs)

**3/8" Capacity - 1.0 hp (0.75 kW) - Reversible**

Part Number	Free RPM	Overall Length	Weight
<b>SDR10P25R3</b>	2500	7-5/8" (193 mm)	2.6 lbs (1.15 kgs)

**1/2" Capacity - 1.0 hp (0.75 kW) - Non-Reversible**

Part Number	Free RPM	Overall Length	Weight
<b>SDR10P7N4*</b>	700	9-5/8" (244 mm)	3.3 lbs (1.5 kgs)
<b>SDR10P4N4*</b>	400	9-5/8" (244 mm)	3.3 lbs (1.5 kgs)

\* 1/2"-20 spindle thread.

**Cleco® Variable Speed Air Drills**



*Includes Keyed Chuck*

**135DPV-7B-43**

*Versatile Governed Speed Control*

- Calibrated dial on rear of tool simplifies drill speed selection.
- Choice of three governed speed models to match material.

**3/8" Capacity - 0.7 hp (0.52 kW) - Non-Reversible**

Part Number	Free RPM	RPM (governed)	Overall Length	Weight
<b>135DPV-7B-43</b>	600	150 - 550	9-5/8" (244 mm)	3.625 lbs (1.6 kgs)
<b>135DPV-14B-51</b>	1250	400 - 1,200	9-1/4" (235 mm)	3.375 lbs (1.5 kgs)
<b>135DPV-28B-51</b>	2600	700 - 2,400	8-1/2" (216 mm)	3.125 lbs (1.4 kgs)

**1/2" Capacity - 0.7 hp (0.52 kW) - Non-Reversible**

Part Number	Free RPM	RPM (governed)	Overall Length	Weight
<b>135DPV-7B-50</b>	600	150 - 550	9-5/8" (244 mm)	3.625 lbs (1.6 kgs)
<b>135DPV-14B-50</b>	1250	400 - 1,200	9-1/4" (235 mm)	3.375 lbs (1.5 kgs)

**Support Handle**

- Support handle included with all 1/2" capacity drills.

Part Number	Description
<b>861006</b>	Support Handle

**Jet® Economy Air Drill**



*New Reversible Model*

- Teasing throttle for positive control.
- Ball & needle bearing construction.
- Muffled rear exhaust for quiet operation.
- Includes keyed chuck.

**3/8" Capacity - 0.5 hp (0.37 kW) - Reversible**

Part Number	Free RPM	Overall Length	Weight
<b>JSM-705</b>	1800	6-1/2" (165 mm)	2.6 lbs (1.2 kgs)



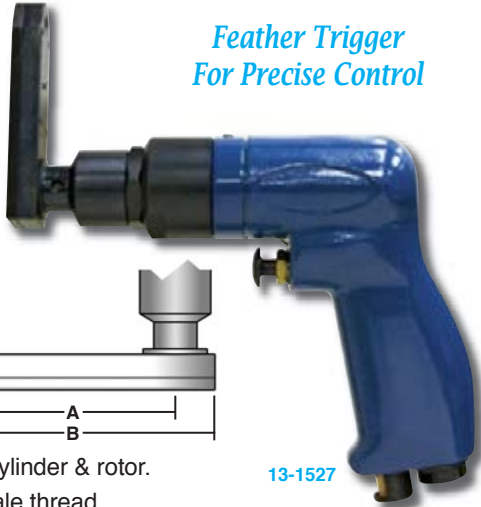
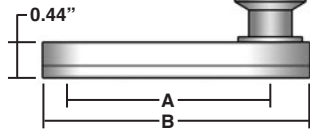
*For Boelube® Drilling Lubricant See Page 232*

**USATCO Offset 'Pancake' Air Drills**

**NEW**

*Feather Trigger  
For Precise Control*

*Smooth,  
Quiet  
Operation*



- Steel alloy cylinder & rotor. **13-1527**
- 1/4"-28 female thread.
- Full 360° rotating offset head great for limited access areas.

Note: Air inlet 1/4" NPT. Uses threaded shank drills available on pages 22-23.

**1/4" Capacity - 0.3 hp (0.22 kW) - Non-Reversible**

Part Number	Free RPM	Shaft Offset (A)	Offset Length (B)	Overall Length	Weight
<b>13-1527</b>	3000	2.49"	3.34"	7" (178 mm)	2.0 lbs (0.91 kgs)
<b>13-1529</b>	3000	3.83"	4.88"	7" (178 mm)	2.1 lbs (0.95 kgs)
<b>13-1531</b>	3000	5.18"	6.23"	7" (178 mm)	2.3 lbs (1.04 kgs)

**USATCO Economy Mini Air Drill**



*Economically Priced*

- Compact & lightweight.
- Teasing throttle.
- Includes keyed chuck.

**1/4" Capacity - 0.3 hp (0.22 kW) - Non-Reversible**

Part Number	Free RPM	Overall Length	Weight
<b>13-1127-25</b>	3000	6-1/4" (159 mm)	1.5 lbs (0.7 kgs)

**Threaded Shank Drill Adapters**

*Great For Cordless Drills*

Allows a chucked drill to accept threaded shank bits.



Part Number	Shank	Thread
<b>70456</b>	1/4" Hex	1/4"-28
<b>70449</b>	1/4" Hex	10-32

**Jacobs® Plain Bearing Chucks & Chuck Keys**

*O.E.M. Standard For  
Accuracy & Durability*

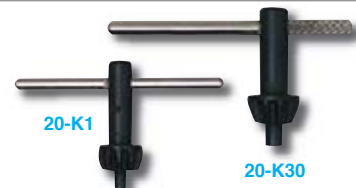


**20-14700**

Part Number	Ref. Number	Capacity	Mount Thread	Key Number	Style
<b>20-6200</b>	0	5/32"	0 JT	K0	Smooth
<b>20-6208</b>	1B	1/4"	3/8-24	K1	Smooth
<b>20-6255</b>	7BA	1/4"	3/8-24	K7	Fluted
<b>20-14700</b>	41BA	3/8"	3/8-24	K30	Fluted
<b>20-6283</b>	33BA-3/8	1/2"	3/8-24	K32	Fluted
<b>20-6138</b>	33BA-1/2	1/2"	1/2-20	K32	Fluted

**Chuck Keys**

- Soft steel handles limit potential for fracturing under excessive load.



'T' Handle Keys		
Part No.	Model	Pilot Size
<b>20-K0</b>	K0	1/8"
<b>20-K1</b>	K1	5/32"

Thumb Handle Keys		
Part No.	Model	Pilot Size
<b>20-K7</b>	K7	7/32"
<b>20-K30</b>	K30	15/64"
<b>20-K32</b>	K32	1/4"

**Chicago Pneumatic® Economy Air Drills**

*Durable &  
Cost Effective*



**RP9790**

- Good general speed tool with an industrial quality chuck.
- Hardened and ground precision parts for extended service life.

\* RP9286 (1/2" capacity) includes required support handle.

**3/8" Capacity - 0.5 hp (0.37 kW) - Non-Reversible**

Part Number	Free RPM	Overall Length	Weight
<b>RP9285</b>	2400	7" (178 mm)	2.25 lbs (1.0 kgs)

**3/8" Capacity - 0.37 hp (0.27 kW) - Reversible**

Part Number	Free RPM	Overall Length	Weight
<b>RP9790</b>	2000	6-1/2" (165 mm)	3.0 lbs (1.4 kgs)

**1/2" Capacity - 0.5 hp (0.37 kW) - Non-Reversible**

Part Number	Free RPM	Overall Length	Weight
<b>RP9286*</b>	500	7-3/4" (197 mm)	3.0 lbs (1.4 kgs)

**Jacobs® Hand-Tite Keyless Drilling Chucks**

*Ergonomic Design*



- Keyless operation.
- Superior gripping force.

Part Number	Capacity Range	Mount Thread
20-30360	3/64" to 3/8"	3/8"-24
20-31038	1/16" to 1/2"	1/2"-20
20-31037	1/16" to 1/2"	3/8"-24

**Heavy-Duty Keyless Chucks**

*All Steel Construction*



Works with reversible & non-reversible drills.

Part Number	Capacity Range	Mount Thread
20-520	0 - 3/8"	3/8"-24
20-522	1/16" - 1/2"	3/8"-24

**Micro Drill Chuck**

**NEW**



- Used with very small dia. drills in a drill press or handheld tool.
- Grips firmly and accurately in sizes as small as a human hair.
- Can be held in any 1/8" or 3/16" collet or larger adj. drill chuck.

Part Number	Accepts Drill Sizes
67-149-5	#60 to #80 Wire Gauge

**Keyless Impact Chucks**

**NEW**

*Superior Holding Power*



*Square Drive, Keyless Design*

20-90430

Transform your impact wrench into an efficient drilling tool.

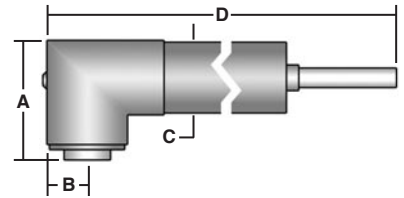
**Note:** For use with standard impact tools, see pages 136-137.

Part Number	Capacity Range	Square Drive Mount	Overall Length (open)
20-90424	3/32" to 3/8"	3/8"	2-3/32" (53 mm)
20-90430	1/8" to 1/2"	1/2"	2-5/8" (67 mm)

**USATCO Angle Drill Attachments**

*Quickly Connect To Any Drill Chuck*

Convenient & inexpensive close quarter drilling tools.



20-127-4

**90° Angle Head, 1/4" Capacity, 1/4"-28 Thread**

Part Number	Head Height (A)	Side To Center (B)	Diameter (C)	Overall Length (D)
20-127-4	1-9/32" (33 mm)	1-1/4" (32 mm)	3/4" (19 mm)	7-1/8" (181 mm)



20-133-20

**90° Mini Angle Head, 1/4" Capacity, 10-32 Thread**

Part Number	Head Height (A)	Side To Center (B)	Diameter (C)	Overall Length (D)
20-133-20	1-3/16" (30 mm)	0.212" (5 mm)	1/2" (13 mm)	6" (155 mm)



20-127-45-4

**45° Angle Head, 5/32" Capacity, 1/4"-28 Thread**

Part Number	Head Height (A)	Side To Center (B)	Diameter (C)	Overall Length (D)
20-127-45-4	1-3/16" (30 mm)	0.400" (10 mm)	3/4" (19 mm)	7-1/2" (191 mm)



53-127-4C

*Includes Adapter, 1/4" Chuck & Chuck Key*

**90° Angle Head With Keyed Chuck, 5/32" Capacity**

Part Number	Head Height (A)	Side To Center (B)	Diameter (C)	Overall Length (D)
53-127-4C	2-7/16" (62 mm)	0.425" (11 mm)	3/4" (19 mm)	7-1/8" (181 mm)



20-129-4

*Locks In Any Position*

**Note:** Shaft offset: 1-7/16" (37 mm).

**360° Rotating Offset Head, 1/4" Capacity, 1/4"-28 Thread**

Part Number	Head Height (A)	Side To Center (B)	Diameter (C)	Overall Length (D)
20-129-4	1-1/4" (32 mm)	0.384" (10 mm)	3/4" (19 mm)	7-5/8" (194 mm)

**Socket Drive Angle Drill Attachment**

**NEW**



Versatile tool will fit any 1/4" sq. drive ratchet or wrench.

**Note:** Chart references angle attachment illustration on previous page.

**90° Angle Head, 1/4" Square Drive**

Part Number	Head Height (A)	Side To Center (B)	Diameter (C)	Overall Length (D)
20-350	1.60" (41 mm)	1-3/8" (35 mm)	3/4" (19 mm)	7" (178 mm)

**USATCO Angle Drill Attachment Kit**



**Kit Includes:**

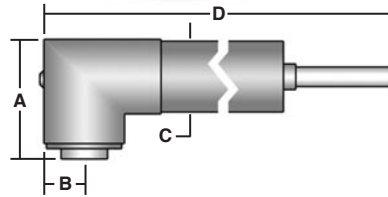
Angle Drill Attachment (20-127-4), Threaded Shank Drill Bits (1 each #40, #30, #21 & #10), Gear Lubricator, Gear Lube, Wrench, Repair Parts List & Plastic Kit Box (not shown)

Part Number	Description
53-127K	Complete 9 PC Kit

**USATCO Snake Drill Attachments**



20-128-4



*Excellent Drilling Solutions For Hard To Reach Areas*

**90° Angle Head, 1/4" Capacity, 1/4"-28 Thread**

Part Number	Head Height (A)	Side To Center (B)	Diameter (C)	Overall Length (D)
20-128-4	1-9/32" (33 mm)	0.384" (10 mm)	3/4" (19 mm)	30" (76 cm)

**90° Mini Angle Head, 5/16" Capacity, 10-32 Thread**

Part Number	Head Height (A)	Side To Center (B)	Diameter (C)	Overall Length (D)
20-132-20	15/16" (24 mm)	0.275" (7 mm)	11/16" (18 mm)	22" (56 cm)

**90° Angle Head With Jacobs Chuck, 1/4" Capacity**

Part Number	Head Height (A)	Side To Center (B)	Diameter (C)	Overall Length (D)
20-134-1C	2-7/8" (73 mm)	0.565" (14 mm)	3/4" (19 mm)	30" (76 cm)

**Straight Head, 5/16" Capacity, 1/4"-28 Thread**

Part Number	Head Height (A)	Side To Center (B)	Diameter (C)	Overall Length (D)
20-131-4	11/16" (18 mm)	5/8" (16 mm)	11/16" (18 mm)	22" (56 cm)

**Straight Head With Jacobs Chuck, 1/4" Capacity**

Part Number	Head Height (A)	Side To Center (B)	Diameter (C)	Overall Length (D)
20-134-2C	—	0.565" (14 mm)	5/8" (16 mm)	30" (76 cm)

**45° Angle Head, 1/4" Capacity, 1/4"-28 Thread**

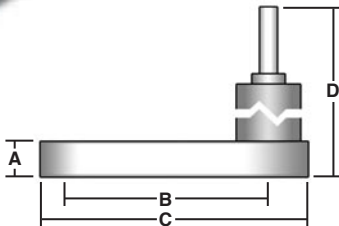
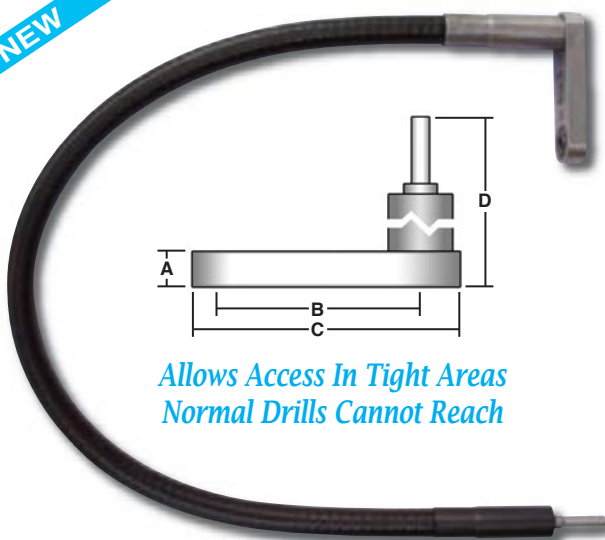
Part Number	Head Height (A)	Side To Center (B)	Diameter (C)	Overall Length (D)
20-128-45-4	1-3/16" (30 mm)	0.400" (10 mm)	3/4" (19 mm)	30" (76 cm)

**360° Adjustable Angle Head, 1/4" Capacity, 1/4"-28 Thread**

Part Number	Head Height (A)	Side To Center (B)	Diameter (C)	Overall Length (D)
20-130-4	1-1/4" (32 mm)	0.384" (10 mm)	3/4" (19 mm)	30" (76 cm)

**USATCO Offset 'Pancake' Snake Drill Attachment**

**NEW**



*Allows Access In Tight Areas Normal Drills Cannot Reach*

**Flat Offset Head, 1/4" Capacity, 1/4"-28 Thread**

Part Number	(A) Offset Thickness	Shaft Offset (B)	Offset Length (C)	Overall Length (D)
20-T-635	7/16" (11 mm)	2-5/16" (59 mm)	3-3/16" (81 mm)	30" (76 cm)



**360° Snake Drill Attachment**



- Angle head rotates a full 360° & can be locked in any position.
- 20-M3 chuck (accepts straight shank drills).
- Includes wrenches & allen key.

**Note:** Chart references snake attachment illustration on previous page.

360° Adjustable Angle Head, 1/4" Capacity, 1/4"-28 Thread				
Part Number	Head Height (A)	Side To Center (B)	Diameter (C)	Overall Length (D)
20-128-360	3" (76 mm)	0.385" (10 mm)	0.608" (15 mm)	30" (76 cm)

**Drill Attachment Conversion Assembly**

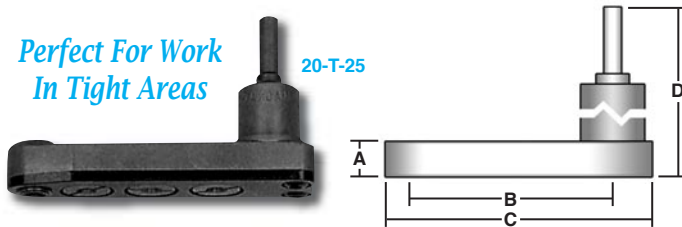
- Convert any angle or snake drill attachment to convenient keyed chuck mode.
- Includes 1/4"-28 thd. adapter, 5/32" cap. chuck & chuck key.



Part Number	Diameter	Side To Center	Overall Length
53-77	0.85" (21.6 mm)	0.45" (11.4 mm)	1.65" (42 mm)

**Flat Offset Angle Drill Attachments**

*Perfect For Work In Tight Areas*



**Note:** 1/4"-28 thread standard. Also available with 10-32 thread, please inquire.

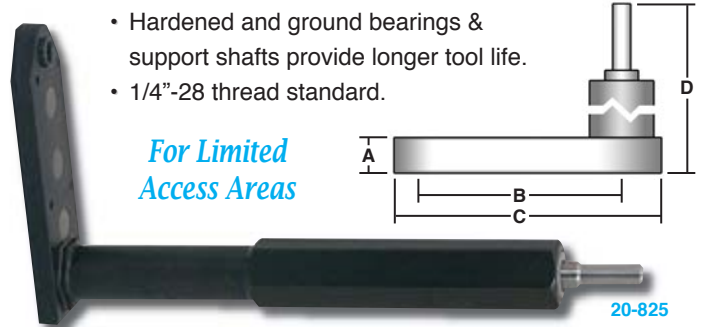
1/8" Capacity - 1/4" Offset Thickness (A)			
Part No.	Shaft Offset (B)	Offset Length (C)	Overall Length (D)
20-T-21	3/4" (19 mm)	1-1/2" (38 mm)	5-5/8" (143 mm)

1/4" Capacity - 7/16" Offset Thickness (A)			
Part No.	Shaft Offset (B)	Offset Length (C)	Overall Length (D)
20-T-23	1-5/32" (29 mm)	2-3/16" (56 mm)	6-1/2" (165 mm)
20-T-25	2-5/16" (59 mm)	3-3/16" (81 mm)	2" (51 mm)
20-T-235	2-5/16" (59 mm)	3-3/16" (81 mm)	6-5/8" (168 mm)

**Thin Offset Angle Drill Attachments**

- Hardened and ground bearings & support shafts provide longer tool life.
- 1/4"-28 thread standard.

*For Limited Access Areas*



Straight - 3/8" Offset Thickness (A)			
Part No.	Shaft Offset (B)	Offset Length (C)	Overall Length (D)
20-720	2-7/16" (62 mm)	3-3/16" (81 mm)	1-1/8" (29 mm)
20-725	2-7/16" (62 mm)	3-3/16" (81 mm)	4-9/16" (116 mm)
20-730	3-3/4" (95 mm)	4-1/2" (114 mm)	1-1/8" (29 mm)
20-735	3-3/4" (95 mm)	4-1/2" (114 mm)	4-9/16" (116 mm)

Straight - 1/4" Offset Thickness (A)			
Part No.	Shaft Offset (B)	Offset Length (C)	Overall Length (D)
20-820	2-7/16" (62 mm)	3-3/16" (81 mm)	11/16" (18 mm)
20-825	2-7/16" (62 mm)	3-3/16" (81 mm)	5-3/16" (132 mm)
20-830	3-3/4" (95 mm)	4-1/2" (114 mm)	11/16" (18 mm)
20-835	3-3/4" (95 mm)	4-1/2" (114 mm)	5-3/16" (132 mm)

30° Offset - 3/8" Offset Thickness (A)			
Part No.	Shaft Offset (B)	Offset Length (C)	Overall Length (D)
20-745	3-1/8" R (79 mm)	4" (102 mm)	4-9/16" (116 mm)
20-755	3-1/8" L (79 mm)	4" (102 mm)	4-9/16" (116 mm)

30° Offset - 0.290" Offset Thickness (A)			
Part No.	Shaft Offset (B)	Offset Length (C)	Overall Length (D)
20-845	Right	4" (102 mm)	4-5/16" (110 mm)
20-855	Left	4" (102 mm)	4-5/16" (110 mm)

**IRWIN Unibit® Step Drill Sets**

*Versatile & Economical*

- Money saving sets provide a wide range of hole sizes.
- Preferred by mechanics.
- 4 PC set includes plastic case (not shown).



Part No.	Description	Sizes (1/8" mat.)	Sizes (3/8" mat.)
02-10502	3 PC Set	1/8" to 3/4"	3/16" to 1/2"
02-10225	4 PC Set	1/8" to 1-3/8"	3/16" to 1/2"

# AIR DRILLS & ACCESSORIES

## IRWIN Unibit® Self-Starting Step Drills



02-10101T

- Single flute cutting edge for greater control through steps.
- Many other styles & sizes available, please inquire.

Fractional Step Drills					
Part Number H.S.S.	Part Number TiN	# Of Holes	Hole Size Range	Shank Size	Maximum Material Thickness
02-10101	02-10101T	13	1/8" to 1/2"	1/4"	1/8"
02-10102	02-10102T	6	3/16" to 1/2"	1/4"	3/8"
02-10103	02-10103T	9	1/4" to 3/4"	3/8"	1/8"
02-10104	02-10104T	12	3/16" to 7/8"	3/8"	1/8"
02-10105	—	10	1/4" to 1-3/8"	1/2"	1/8"

Metric Step Drills					
Part Number H.S.S.	Part Number TiN	# Of Holes	Hole Size Range	Shank Size	Maximum Material Thickness
02-11101	02-11101T	9	4 to 12 mm	6.35 mm	5 mm
02-11102	02-11102T	5	4 to 12 mm	6.35 mm	11 mm
02-11103	02-11103T	7	6 to 18 mm	9.53 mm	5 mm
02-11104	02-11104T	10	4 to 22 mm	9.53 mm	5 mm
02-11105	02-11105T	13	5 to 35 mm	12.70 mm	3.5 mm

## Solid Carbide Poly Drills



- Produces clean, burr-free holes in composites. *Patented Design*
- Three right hand spiral flutes (1-1/2" length).

Part Number	Diameter	Decimal	Overall Length
15660	5.0 mm	.1969"	3-5/8" (92 mm)
15662	6.0 mm	.2362"	4" (102 mm)
15676	1/4"	.2500"	4" (102 mm)
15663	6.5 mm	.2559"	4-1/8" (105 mm)
15664	7.0 mm	.2756"	4-1/8" (105 mm)
15665	7.5 mm	.2953"	4-3/8" (111 mm)
15666	8.0 mm	.3150"	4-1/2" (114 mm)
15667	8.5 mm	.3346"	4-3/4" (121 mm)
15668	9.0 mm	.3543"	4-7/8" (124 mm)
15669	9.5 mm	.3740"	5" (127 mm)
15670	10.0 mm	.3937"	5-1/8" (130 mm)
15671	10.5 mm	.4134"	5-3/8" (137 mm)
15672	11.0 mm	.4331"	5-1/2" (140 mm)
15673	11.5 mm	.4528"	5-5/8" (143 mm)
15674	12.0 mm	.4724"	5-7/8" (149 mm)
15678	1/2"	.5000"	6" (152 mm)

## Jobber's Length Drill Sets & Chucking Reamer Sets



02-C1-H



02-127S14

*Sturdy Metal Case Included*

### Jobber's Length Drill Sets

- High performance, made in the USA.

Drill Sets - Heavy Duty, 118° Non-Split Point			
Part No.	Construction	Included Sizes	Bits
02-C13-H	High Speed Steel	1/16" to 1/4" (x 64ths)	13
02-C21-H	High Speed Steel	1/16" to 3/8" (x 64ths)	21
02-C15-H	High Speed Steel	1/16" to 1/2" (x 32nds)	15
02-C29-H	High Speed Steel	1/16" to 1/2" (x 64ths)	29
02-C1-H	High Speed Steel	#1 to #60	60
02-CAZ-H	High Speed Steel	A to Z	26
02-C115-H	High Speed Steel	1/16"-1/2", A-Z, #1-#60	115
02-C112-H*	High Speed Steel	1 to 6 mm (x 0.5 mm)	11
02-C252-H*	High Speed Steel	1 to 13 mm (x 0.5 mm)	25

Drill Sets - Heavy Duty, 118° Split Point			
Part No.	Construction	Included Sizes	Bits
02-CB115-H	Cobalt	1/16"-1/2", A-Z, #1-#60	115
02-CT15-H*	H.S.S. TiN Coated	1/16" to 1/2" (x 32nds)	15

Drill Sets - Heavy Duty, 135° Split Point			
Part No.	Construction	Included Sizes	Bits
02-CB13-H	Cobalt	1/16" to 1/4" (x 64ths)	13
02-CB21-H	Cobalt	1/16" to 3/8" (x 64ths)	21
02-CB15-H	Cobalt	1/16" to 1/2" (x 32nds)	15
02-CB29-H	Cobalt	1/16" to 1/2" (x 64ths)	29
02-CT29-H	H.S.S. TiN Coated	1/16" to 1/2" (x 64ths)	29
02-CB60-H	Cobalt	#1 to #60	60
02-CT60-H	H.S.S. TiN Coated	#1 to #60	60
02-CB26-H	Cobalt	A to Z	26

\* Production grade.

### Chucking Reamer Sets

- Reamers are straight shank, straight flute, right hand cut.

Chucking Reamer Sets			
Part No. H.S.S.	Part No. Cobalt	Included Sizes	Bits
02-127S02	02-CB127S02	1/16" to 1/2" (x 64ths)	29
02-127S11	02-CB127S11	#1 to #60	60
02-127S14	02-CB127S14	A to Z	26

Aircraft Quality Jobber's Length Drills

Made to NAS907 Specifications



Note: To order, select desired drill type (prefix) & add the desired drill size (suffix). Example: For a #30 H.S.S. (118° split point) drill, the number would be 02-R18A-30  
 Wire Gauge: Sold 12 per pack (all sizes).

Wire Gauge Part Number (Prefix)				02-R18A	02-R18B	02-R18C	02-R18D	02-D2S	02-D2E
Wire Gauge Size (Suffix)	Decimal Equivalent	Flute Length	Overall Length	H.S.S. (118° SP)	H.S.S. (135° SP)	Cobalt (135° SP)	TiN Coated (118° SP)	Carbide Tipped	Carbide (118° SP)
1	.2280"	2-5/8"	3-7/8"	•	•	•	•	•	•
2	.2210"	2-5/8"	3-7/8"	•	•	•	•	•	•
3	.2130"	2-1/2"	3-3/4"	•	•	•	•	•	•
4	.2090"	2-1/2"	3-3/4"	•	•	•	•	•	•
5	.2055"	2-1/2"	3-3/4"	•	•	•	•	•	•
6	.2040"	2-1/2"	3-3/4"	•	•	•	•	•	•
7	.2010"	2-7/16"	3-5/8"	•	•	•	•	•	•
8	.1990"	2-7/16"	3-5/8"	•	•	•	•	•	•
9	.1960"	2-7/16"	3-5/8"	•	•	•	•	•	•
10	.1935"	2-7/16"	3-5/8"	•	•	•	•	•	•
11	.1910"	2-5/16"	3-1/2"	•	•	•	•	•	•
12	.1890"	2-5/16"	3-1/2"	•	•	•	•	•	•
13	.1850"	2-5/16"	3-1/2"	•	•	•	•	•	•
14	.1820"	2-3/16"	3-3/8"	•	•	•	•	•	•
15	.1800"	2-3/16"	3-3/8"	•	•	•	•	•	•
16	.1770"	2-3/16"	3-3/8"	•	•	•	•	•	•
17	.1730"	2-3/16"	3-3/8"	•	•	•	•	•	•
18	.1695"	2-1/8"	3-1/4"	•	•	•	•	•	•
19	.1660"	2-1/8"	3-1/4"	•	•	•	•	•	•
20	.1610"	2-1/8"	3-1/4"	•	•	•	•	•	•
21	.1590"	2-1/8"	3-1/4"	•	•	•	•	•	•
22	.1570"	2"	3-1/8"	•	•	•	•	•	•
23	.1540"	2"	3-1/8"	•	•	•	•	•	•
24	.1520"	2"	3-1/8"	•	•	•	•	•	•
25	.1495"	1-7/8"	3"	•	•	•	•	•	•
26	.1470"	1-7/8"	3"	•	•	•	•	•	•
27	.1440"	1-7/8"	3"	•	•	•	•	•	•
28	.1405"	1-3/4"	2-7/8"	•	•	•	•	•	•
29	.1360"	1-3/4"	2-7/8"	•	•	•	•	•	•
30	.1285"	1-5/8"	2-3/4"	•	•	•	•	•	•
31	.1200"	1-5/8"	2-3/4"	•	•	•	•	•	•
32	.1160"	1-5/8"	2-3/4"	•	•	•	•	•	•
33	.1130"	1-1/2"	2-5/8"	•	•	•	•	•	•
34	.1110"	1-1/2"	2-5/8"	•	•	•	•	•	•
35	.1100"	1-1/2"	2-5/8"	•	•	•	•	•	•
36	.1065"	1-7/16"	2-1/2"	•	•	•	•	•	•
37	.1040"	1-7/16"	2-1/2"	•	•	•	•	•	•
38	.1015"	1-7/16"	2-1/2"	•	•	•	•	•	•
39	.0995"	1-3/8"	2-3/8"	•	•	•	•	•	•
40	.0980"	1-3/8"	2-3/8"	•	•	•	•	•	•
41	.0969"	1-3/8"	2-3/8"	•	•	•	•	•	•
42	.0935"	1-1/4"	2-1/4"	•	•	•	•	•	•
43	.0890"	1-1/4"	2-1/4"	•	•	•	•	•	•
44	.0860"	1-1/8"	2-1/8"	•	•	•	•	•	•
45	.0820"	1-1/8"	2-1/8"	•	•	•	•	•	•
46	.0810"	1-1/8"	2-1/8"	•	•	•	•	•	•
47	.0785"	1"	2"	•	•	•	•	•	•
48	.0760"	1"	2"	•	•	•	•	•	•
49	.0730"	1"	2"	•	•	•	•	•	•
50	.0700"	1"	2"	•	•	•	•	•	•
51	.0670"	1"	2"	•	•	•	•	•	•
52	.0635"	7/8"	1-7/8"	•	•	•	•	•	•
53	.0595"	7/8"	1-7/8"	N/A	N/A	•	•	•	•
54	.0550"	7/8"	1-7/8"	N/A	N/A	•	•	•	•
55	.0520"	7/8"	1-7/8"	N/A	N/A	•	•	•	•
56	.0465"	3/4"	1-3/4"	N/A	N/A	•	•	•	•
57	.0430"	3/4"	1-3/4"	N/A	N/A	•	•	•	•
58	.0420"	11/16"	1-5/8"	N/A	N/A	•	•	•	•
59	.0410"	11/16"	1-5/8"	N/A	N/A	•	•	•	•
60	.0400"	11/16"	1-5/8"	N/A	N/A	•	•	•	•

## Aircraft Quality Jobber's Length Drills (cont'd)

Made to NAS907 Specifications



**Note:** To order, select desired drill type (prefix) & add the desired drill size (suffix). **Example:** For a 1/4" H.S.S. (118° split point) drill, the number would be **02-R10A-1/4**  
**Fractional:** Sold 12 per pack (1/16" - 19/64") & 6 per pack (5/16" - 1/2").

Fractional Part Number (Prefix)				02-R10A	02-R10B	02-R10C	02-R10D	02-D2S	02-D2E
Fractional Size (Suffix)	Decimal Equivalent	Flute Length	Overall Length	H.S.S. (118° SP)	H.S.S. (135° SP)	Cobalt (135° SP)	TiN Coated (118° SP)	Carbide Tipped	Carbide (118° SP)
1/16	.0625"	7/8"	1-7/8"	•	•	•	•	N/A	•
5/64	.0781"	1"	2"	•	•	•	•	N/A	•
3/32	.0938"	1-1/4"	2-1/4"	•	•	•	•	N/A	•
7/64	.1094"	1-1/2"	2-5/8"	•	•	•	•	N/A	•
1/8	.1250"	1-5/8"	2-3/4"	•	•	•	•	•	•
9/64	.1406"	1-3/4"	2-7/8"	•	•	•	•	•	•
5/32	.1562"	2"	3-1/8"	•	•	•	•	•	•
11/64	.1719"	2-1/8"	3-1/4"	•	•	•	•	•	•
3/16	.1875"	2-5/16"	3-1/2"	•	•	•	•	•	•
13/64	.2031"	2-7/16"	3-5/8"	•	•	•	•	•	•
7/32	.2188"	2-1/2"	3-3/4"	•	•	•	•	•	•
15/64	.2344"	2-5/8"	3-7/8"	•	•	•	•	•	•
1/4	.2500"	2-3/4"	4"	•	•	•	•	•	•
17/64	.2656"	2-7/8"	4-1/8"	•	•	•	•	•	•
9/32	.2812"	2-15/16"	4-1/4"	•	•	•	•	•	•
19/64	.2969"	3-1/16"	4-3/8"	•	•	•	•	•	•
5/16	.3125"	3-3/16"	4-1/2"	•	•	•	•	•	•
21/64	.3281"	3-5/16"	4-5/8"	•	•	•	•	•	•
11/32	.3438"	3-7/16"	4-3/4"	•	•	•	•	•	•
23/64	.3594"	3-1/2"	4-7/8"	•	•	•	•	•	•
3/8	.3750"	3-5/8"	5"	•	•	•	•	•	•
25/64	.3906"	3-3/4"	5-1/8"	•	•	•	•	•	•
13/32	.4062"	3-7/8"	5-1/4"	•	•	•	•	•	•
27/64	.4219"	3-15/16"	5-3/8"	•	•	•	•	•	•
7/16	.4375"	4-1/16"	5-1/2"	•	•	•	•	•	•
29/64	.4531"	4-3/16"	5-5/8"	•	•	•	•	•	•
15/32	.4688"	4-5/16"	5-3/4"	•	•	•	•	•	•
31/64	.4844"	4-3/8"	5-7/8"	•	•	•	•	•	•
1/2	.5000"	4-1/2"	6"	•	•	•	•	•	•

**Letter:** Sold 12 per pack (A - N) & 6 per pack (O - Z).

Letter Part Number (Prefix)				02-R15A	02-R15B	02-R15C	02-D2S	02-D2E
Letter Size (Suffix)	Decimal Equivalent	Flute Length	Overall Length	H.S.S. (118° SP)	H.S.S. (135° SP)	Cobalt (135° SP)	Carbide Tipped	Carbide (118° SP)
A	.2340"	2-5/8"	3-7/8"	•	•	•	•	•
B	.2380"	2-3/4"	4"	•	•	•	•	•
C	.2420"	2-3/4"	4"	•	•	•	•	•
D	.2460"	2-3/4"	4"	•	•	•	•	•
E	.2500"	2-3/4"	4"	•	•	•	•	•
F	.2570"	2-7/8"	4-1/8"	•	•	•	•	•
G	.2610"	2-7/8"	4-1/8"	•	•	•	•	•
H	.2660"	2-7/8"	4-1/8"	•	•	•	•	•
I	.2720"	2-7/8"	4-1/8"	•	•	•	•	•
J	.2770"	2-7/8"	4-1/8"	•	•	•	•	•
K	.2810"	2-15/16"	4-1/4"	•	•	•	•	•
L	.2900"	2-15/16"	4-1/4"	•	•	•	•	•
M	.2950"	3-1/16"	4-3/8"	•	•	•	•	•
N	.3020"	3-1/16"	4-3/8"	•	•	•	•	•
O	.3160"	3-3/16"	4-1/2"	•	•	•	•	•
P	.3230"	3-5/16"	4-5/8"	•	•	•	•	•
Q	.3320"	3-7/16"	4-3/4"	•	•	•	•	•
R	.3390"	3-7/16"	4-3/4"	•	•	•	•	•
S	.3480"	3-1/2"	4-7/8"	•	•	•	•	•
T	.3580"	3-1/2"	4-7/8"	•	•	•	•	•
U	.3680"	3-5/8"	5"	•	•	•	•	•
V	.3770"	3-5/8"	5"	•	•	•	•	•
W	.3860"	3-3/4"	5-1/8"	•	•	•	•	•
X	.3970"	3-3/4"	5-1/8"	•	•	•	•	•
Y	.4040"	3-7/8"	5-1/4"	•	•	•	•	•
Z	.4130"	3-7/8"	5-1/4"	•	•	•	•	•

**Aircraft Quality Jobber's Length Drills (cont'd)**

*Made to NAS907 Specifications*



**Note:** To order, select desired drill type (prefix) & add the desired drill size (suffix). **Example:** For a 2.0mm H.S.S. (118° split point) drill, the number would be **02-2A-2.00**  
**Metric:** Sold 12 per pack (.35mm - 7.50mm).

Metric Part Number (Prefix)				02-2A	02-2AC
Metric Size (Suffix)	Decimal Equivalent	Flute Length	Overall Length	H.S.S. (118° SP)	Cobalt (135°)
.35	.0138"	3 mm	19 mm	•	N/A
.40	.0158"	5 mm	20 mm	•	N/A
.45	.0177"	5 mm	20 mm	•	N/A
.50	.0197"	5 mm	22 mm	•	N/A
.55	.0217"	6 mm	24 mm	•	N/A
.60	.0236"	8 mm	24 mm	•	N/A
.65	.0256"	10 mm	26 mm	•	N/A
.70	.0276"	10 mm	28 mm	•	N/A
.75	.0295"	13 mm	28 mm	•	N/A
.80	.0315"	13 mm	30 mm	•	N/A
.85	.0335"	16 mm	30 mm	•	N/A
.90	.0354"	16 mm	32 mm	•	N/A
.95	.0374"	16 mm	32 mm	•	N/A
1.00	.0394"	17 mm	34 mm	•	•
1.05	.0413"	17 mm	34 mm	•	•
1.10	.0433"	19 mm	36 mm	•	•
1.15	.0453"	19 mm	36 mm	•	•
1.20	.0472"	22 mm	38 mm	•	•
1.25	.0492"	22 mm	38 mm	•	•
1.30	.0512"	22 mm	38 mm	•	•
1.35	.0531"	22 mm	40 mm	•	•
1.40	.0551"	22 mm	40 mm	•	•
1.45	.0571"	22 mm	40 mm	•	•
1.50	.0591"	22 mm	40 mm	•	•
1.55	.0610"	22 mm	43 mm	•	•
1.60	.0630"	22 mm	43 mm	•	•
1.65	.0650"	25 mm	43 mm	•	•
1.70	.0669"	25 mm	43 mm	•	•
1.75	.0689"	25 mm	46 mm	•	•
1.80	.0709"	25 mm	46 mm	•	•
1.85	.0728"	25 mm	46 mm	•	•
1.90	.0748"	25 mm	46 mm	•	•
1.95	.0768"	25 mm	49 mm	•	•
2.00	.0787"	25 mm	49 mm	•	•
2.05	.0807"	29 mm	49 mm	•	•
2.10	.0827"	29 mm	49 mm	•	•
2.15	.0846"	29 mm	53 mm	•	•
2.20	.0866"	32 mm	53 mm	•	•
2.25	.0886"	32 mm	53 mm	•	•
2.30	.0906"	32 mm	53 mm	•	•
2.35	.0925"	32 mm	53 mm	•	•
2.40	.0945"	35 mm	57 mm	•	•
2.45	.0965"	35 mm	57 mm	•	•
2.50	.0984"	35 mm	57 mm	•	•
2.60	.1024"	37 mm	57 mm	•	•
2.70	.1063"	37 mm	61 mm	•	•
2.75	.1083"	37 mm	61 mm	•	•
2.80	.1102"	38 mm	61 mm	•	•
2.90	.1142"	41 mm	61 mm	•	•
3.00	.1181"	41 mm	61 mm	•	•
3.10	.1220"	41 mm	65 mm	•	•
3.20	.1260"	41 mm	65 mm	•	•
3.25	.1280"	41 mm	65 mm	•	•
3.30	.1299"	44 mm	65 mm	•	•
3.40	.1339"	44 mm	70 mm	•	•
3.50	.1378"	44 mm	70 mm	•	•
3.60	.1417"	48 mm	70 mm	•	•
3.70	.1457"	48 mm	70 mm	•	•
3.75	.1476"	48 mm	75 mm	•	•
3.80	.1496"	48 mm	75 mm	•	•

Metric Part Number (Prefix)				02-2A	02-2AC
Metric Size (Suffix)	Decimal Equivalent	Flute Length	Overall Length	H.S.S. (118° SP)	Cobalt (135°)
3.90	.1535"	51 mm	75 mm	•	•
4.00	.1575"	54 mm	75 mm	•	•
4.10	.1614"	54 mm	75 mm	•	•
4.20	.1654"	54 mm	75 mm	•	•
4.25	.1673"	54 mm	80 mm	•	•
4.30	.1693"	54 mm	80 mm	•	•
4.40	.1739"	56 mm	80 mm	•	•
4.50	.1772"	56 mm	80 mm	•	•
4.60	.1811"	56 mm	80 mm	•	•
4.70	.1850"	59 mm	80 mm	•	•
4.75	.1870"	59 mm	86 mm	•	•
4.80	.1890"	59 mm	86 mm	•	•
4.90	.1929"	62 mm	86 mm	•	•
5.00	.1968"	62 mm	86 mm	•	•
5.10	.2008"	62 mm	86 mm	•	•
5.20	.2047"	64 mm	86 mm	•	•
5.25	.2067"	64 mm	86 mm	•	•
5.30	.2087"	64 mm	86 mm	•	•
5.40	.2126"	64 mm	93 mm	•	•
5.50	.2165"	64 mm	93 mm	•	•
5.60	.2205"	67 mm	93 mm	•	•
5.70	.2244"	67 mm	93 mm	•	•
5.75	.2264"	67 mm	93 mm	•	•
5.80	.2283"	67 mm	93 mm	•	•
5.90	.2323"	67 mm	93 mm	•	•
6.00	.2362"	70 mm	93 mm	•	•
6.10	.2402"	70 mm	101 mm	•	•
6.20	.2441"	70 mm	101 mm	•	•
6.25	.2461"	70 mm	101 mm	•	•
6.30	.2480"	70 mm	101 mm	•	•
6.40	.2520"	73 mm	101 mm	•	•
6.50	.2559"	73 mm	101 mm	•	•
6.60	.2598"	73 mm	101 mm	•	•
6.70	.2638"	73 mm	101 mm	•	•
6.75	.2657"	73 mm	109 mm	•	•
6.80	.2677"	73 mm	109 mm	•	•
6.90	.2717"	73 mm	109 mm	•	•
7.00	.2756"	73 mm	109 mm	•	•
7.10	.2795"	75 mm	109 mm	•	•
7.20	.2835"	75 mm	109 mm	•	•
7.25	.2854"	75 mm	109 mm	•	•
7.30	.2874"	75 mm	109 mm	•	•
7.40	.2913"	78 mm	109 mm	•	•
7.50	.2953"	78 mm	109 mm	•	•



*For A Wide Selection Of Deburring Tools See Pages 92-95*

## Aircraft Quality Extension Length Drills

Made to NAS907 Specifications



**Note:** To order, select desired drill type (prefix) & add the desired drill size (suffix). **Example:** For a #20, 6" cobalt (135° split point) drill, the number would be **02-501-6-20C**

**Wire Gauge:** Sold 12 per pack (6": #1 to #60, 12": #11 to #60) & 6 per pack (12": #1 to #10).

Wire Gauge Part Number (Prefix)			02-501-6	02-501-12	02-501-6_C	02-501-12_C	02-2610	02-2611
Wire Gauge Size (Suffix)	Decimal Equivalent	Flute Length	6" H.S.S. (135° SP)	12" H.S.S. (135° SP)	6" Cobalt (135° SP)	12" Cobalt (135° SP)	6" Carbide Tip (135° SP)	12" Carbide Tip (135° SP)
1	.2280"	2-5/8"	•	•	•	•	•	•
2	.2210"	2-5/8"	•	•	•	•	•	•
3	.2130"	2-1/2"	•	•	•	•	•	•
4	.2090"	2-1/2"	•	•	•	•	•	•
5	.2055"	2-1/2"	•	•	•	•	•	•
6	.2040"	2-1/2"	•	•	•	•	•	•
7	.2010"	2-7/16"	•	•	•	•	•	•
8	.1990"	2-7/16"	•	•	•	•	•	•
9	.1960"	2-7/16"	•	•	•	•	•	•
10	.1935"	2-7/16"	•	•	•	•	•	•
11	.1910"	2-5/16"	•	•	•	•	•	•
12	.1890"	2-5/16"	•	•	•	•	•	•
13	.1850"	2-5/16"	•	•	•	•	•	•
14	.1820"	2-3/16"	•	•	•	•	•	•
15	.1800"	2-3/16"	•	•	•	•	•	•
16	.1770"	2-3/16"	•	•	•	•	•	•
17	.1730"	2-3/16"	•	•	•	•	•	•
18	.1695"	2-1/8"	•	•	•	•	•	•
19	.1660"	2-1/8"	•	•	•	•	•	•
20	.1610"	2-1/8"	•	•	•	•	•	•
21	.1590"	2-1/8"	•	•	•	•	•	•
22	.1570"	2"	•	•	•	•	•	•
23	.1540"	2"	•	•	•	•	•	•
24	.1520"	2"	•	•	•	•	•	•
25	.1495"	1-7/8"	•	•	•	•	•	•
26	.1470"	1-7/8"	•	•	•	•	•	•
27	.1440"	1-7/8"	•	•	•	•	•	•
28	.1405"	1-3/4"	•	•	•	•	•	•
29	.1360"	1-3/4"	•	•	•	•	•	•
30	.1285"	1-5/8"	•	•	•	•	•	•
31	.1200"	1-5/8"	•	•	•	•	•	•
32	.1160"	1-5/8"	•	•	•	•	•	•
33	.1130"	1-1/2"	•	•	•	•	N/A	N/A
34	.1110"	1-1/2"	•	•	•	•	N/A	N/A
35	.1100"	1-1/2"	•	•	•	•	N/A	N/A
36	.1065"	1-7/16"	•	•	•	•	N/A	N/A
37	.1040"	1-7/16"	•	•	•	•	N/A	N/A
38	.1015"	1-7/16"	•	•	•	•	N/A	N/A
39	.0995"	1-3/8"	•	•	•	•	N/A	N/A
40	.0980"	1-3/8"	•	•	•	•	N/A	N/A
41	.0969"	1-3/8"	•	•	•	•	N/A	N/A
42	.0935"	1-1/4"	•	•	•	•	N/A	N/A
43	.0890"	1-1/4"	•	•	•	•	N/A	N/A
44	.0860"	1-1/8"	•	•	•	•	N/A	N/A
45	.0820"	1-1/8"	•	•	•	•	N/A	N/A
46	.0810"	1-1/8"	•	•	•	•	N/A	N/A
47	.0785"	1"	•	•	•	•	N/A	N/A
48	.0760"	1"	•	•	•	•	N/A	N/A
49	.0730"	1"	•	•	•	•	N/A	N/A
50	.0700"	1"	•	•	•	•	N/A	N/A
51	.0670"	1"	•	•	•	•	N/A	N/A
52	.0635"	7/8"	•	•	•	•	N/A	N/A
53	.0595"	7/8"	•	•	•	•	N/A	N/A
54	.0550"	7/8"	•	•	•	•	N/A	N/A
55	.0520"	7/8"	•	•	•	•	N/A	N/A
56	.0465"	3/4"	•	•	•	•	N/A	N/A
57	.0430"	3/4"	•	•	•	•	N/A	N/A
58	.0420"	11/16"	•	•	•	•	N/A	N/A
59	.0410"	11/16"	•	•	•	•	N/A	N/A
60	.0400"	11/16"	•	•	•	•	N/A	N/A

Aircraft Quality Extension Length Drills (cont'd)

Made to NAS907 Specifications



**Note:** To order, select desired drill type (prefix) & add the desired drill size (suffix). **Example:** For a 1/4", 6" H.S.S. (135° split point) drill, the number would be 02-500-6-1/4  
**Fractional:** Sold 12 per pack (6": 1/16" - 1/4", 12": 1/16" - 11/64"), 6 per pack (6": 17/64" - 1/2", 12": 3/16" - 11/32") & 3 per pack (12": 23/64" - 1/2").

Fractional Part Number (Prefix)			02-500-6	02-500-12	02-500-6_C	02-500-12_C	02-2610	02-2611
Fractional Size (Suffix)	Decimal Equivalent	Flute Length	6" H.S.S. (135° SP)	12" H.S.S. (135° SP)	6" Cobalt (135° SP)	12" Cobalt (135° SP)	6" Carbide Tip (135° SP)	12" Carbide Tip (135° SP)
1/16	.0625"	7/8"	•	•	•	•	N/A	N/A
5/64	.0781"	1"	•	•	•	•	N/A	N/A
3/32	.0938"	1-1/4"	•	•	•	•	N/A	N/A
7/64	.1094"	1-1/2"	•	•	•	•	N/A	N/A
1/8	.1250"	1-5/8"	•	•	•	•	•	•
9/64	.1406"	1-3/4"	•	•	•	•	•	•
5/32	.1562"	2"	•	•	•	•	•	•
11/64	.1719"	2-1/8"	•	•	•	•	•	•
3/16	.1875"	2-5/16"	•	•	•	•	•	•
13/64	.2031"	2-7/16"	•	•	•	•	•	•
7/32	.2188"	2-1/2"	•	•	•	•	•	•
15/64	.2344"	2-5/8"	•	•	•	•	•	•
1/4	.2500"	2-3/4"	•	•	•	•	•	•
17/64	.2656"	2-7/8"	•	•	N/A	N/A	•	•
9/32	.2812"	2-15/16"	•	•	N/A	N/A	•	•
19/64	.2969"	3-1/16"	•	•	N/A	N/A	•	•
5/16	.3125"	3-3/16"	•	•	N/A	N/A	•	•
21/64	.3281"	3-5/16"	•	•	N/A	N/A	•	•
11/32	.3438"	3-7/16"	•	•	N/A	N/A	•	•
23/64	.3594"	3-1/2"	•	•	N/A	N/A	•	•
3/8	.3750"	3-5/8"	•	•	N/A	N/A	•	•
25/64	.3906"	3-3/4"	•	•	N/A	N/A	•	•
13/32	.4062"	3-7/8"	•	•	N/A	N/A	•	•
27/64	.4219"	3-15/16"	•	•	N/A	N/A	•	•
7/16	.4375"	4-1/16"	•	•	N/A	N/A	•	•
29/64	.4531"	4-3/16"	•	•	N/A	N/A	•	•
15/32	.4688"	4-5/16"	•	•	N/A	N/A	•	•
31/64	.4844"	4-3/8"	•	•	N/A	N/A	•	•
1/2	.5000"	4-1/2"	•	•	N/A	N/A	•	•

**Letter:** Sold 12 per pack (6": A - F), 6 per pack (6": G - Z, 12": A - R) & 3 per pack (12": S - Z).

Letter Part Number (Prefix)			02-502-6	02-502-12	02-2610	02-2611
Letter Size (Suffix)	Decimal Equivalent	Flute Length	6" H.S.S. (135° SP)	12" H.S.S. (135° SP)	6" Carbide Tip (135° SP)	12" Carbide Tip (135° SP)
A	.2340"	2-5/8"	•	•	•	•
B	.2380"	2-3/4"	•	•	•	•
C	.2420"	2-3/4"	•	•	•	•
D	.2460"	2-3/4"	•	•	•	•
E	.2500"	2-3/4"	•	•	•	•
F	.2570"	2-7/8"	•	•	•	•
G	.2610"	2-7/8"	•	•	•	•
H	.2660"	2-7/8"	•	•	•	•
I	.2720"	2-7/8"	•	•	•	•
J	.2770"	2-7/8"	•	•	•	•
K	.2810"	2-15/16"	•	•	•	•
L	.2900"	2-15/16"	•	•	•	•
M	.2950"	3-1/16"	•	•	•	•
N	.3020"	3-1/16"	•	•	•	•
O	.3160"	3-1/16"	•	•	•	•
P	.3230"	3-5/16"	•	•	•	•
Q	.3320"	3-7/16"	•	•	•	•
R	.3390"	3-7/16"	•	•	•	•
S	.3480"	3-1/2"	•	•	•	•
T	.3580"	3-1/2"	•	•	•	•
U	.3680"	3-5/8"	•	•	•	•
V	.3770"	3-5/8"	•	•	•	•
W	.3860"	3-3/4"	•	•	•	•
X	.3970"	3-3/4"	•	•	•	•
Y	.4040"	3-7/8"	•	•	•	•
Z	.4130"	3-7/8"	•	•	•	•

## Aircraft Quality Stubby Length Drills

Made to NAS907 Specifications



**Note:** To order, select desired drill type (prefix) & add the desired drill size (suffix).

**Example:** For a #40 TiN coated (135° split point) drill, the number would be **02-R41C-40T**

**Wire Gauge:** Sold 12 per pack (#1 to #60).

**Fractional:** Sold 12 per pack (1/16" - 19/64") & 6 per pack (5/16" - 1/2").

Wire Gauge Part Number (Prefix)				02-R41C	02-R41C_C	02-R41C_T
Size (Suffix)	Decimal Equiv.	Flute Length	Overall Length	H.S.S. (135° SP)	Cobalt (135° SP)	TiN Coated (135° SP)
1	.2280"	1-5/16"	2-7/16"	•	•	•
2	.2210"	1-5/16"	2-7/16"	•	•	•
3	.2130"	1-1/4"	2-3/8"	•	•	•
4	.2090"	1-1/4"	2-3/8"	•	•	•
5	.2055"	1-1/4"	2-3/8"	•	•	•
6	.2040"	1-1/4"	2-3/8"	•	•	•
7	.2010"	1-3/16"	2-1/4"	•	•	•
8	.1990"	1-3/16"	2-1/4"	•	•	•
9	.1960"	1-3/16"	2-1/4"	•	•	•
10	.1935"	1-3/16"	2-1/4"	•	•	•
11	.1910"	1-3/16"	2-1/4"	•	•	•
12	.1890"	1-3/16"	2-1/4"	•	•	•
13	.1850"	1-1/8"	2-3/16"	•	•	•
14	.1820"	1-1/8"	2-3/16"	•	•	•
15	.1800"	1-1/8"	2-3/16"	•	•	•
16	.1770"	1-1/8"	2-3/16"	•	•	•
17	.1730"	1-1/8"	2-3/16"	•	•	•
18	.1695"	1-1/16"	2-1/8"	•	•	•
19	.1660"	1-1/16"	2-1/8"	•	•	•
20	.1610"	1-1/16"	2-1/8"	•	•	•
21	.1590"	1-1/16"	2-1/8"	•	•	•
22	.1570"	1-1/16"	2-1/8"	•	•	•
23	.1540"	1"	2-1/16"	•	•	•
24	.1520"	1"	2-1/16"	•	•	•
25	.1495"	1"	2-1/16"	•	•	•
26	.1470"	1"	2-1/16"	•	•	•
27	.1440"	1"	2-1/16"	•	•	•
28	.1405"	15/16"	1-15/16"	•	•	•
29	.1360"	15/16"	1-15/16"	•	•	•
30	.1285"	15/16"	1-15/16"	•	•	•
31	.1200"	7/8"	1-7/8"	•	•	•
32	.1160"	7/8"	1-7/8"	•	•	•
33	.1130"	7/8"	1-7/8"	•	•	•
34	.1110"	7/8"	1-7/8"	•	•	•
35	.1100"	7/8"	1-7/8"	•	•	•
36	.1065"	13/16"	1-13/16"	•	•	•
37	.1040"	13/16"	1-13/16"	•	•	•
38	.1015"	13/16"	1-13/16"	•	•	•
39	.0995"	13/16"	1-13/16"	•	•	•
40	.0980"	13/16"	1-13/16"	•	•	•
41	.0969"	13/16"	1-13/16"	•	•	•
42	.0935"	3/4"	1-3/4"	•	•	•
43	.0890"	3/4"	1-3/4"	•	•	•
44	.0860"	3/4"	1-3/4"	•	•	•
45	.0820"	3/4"	1-3/4"	•	•	•
46	.0810"	3/4"	1-3/4"	•	•	•
47	.0785"	11/16"	1-11/16"	•	•	•
48	.0760"	11/16"	1-11/16"	•	•	•
49	.0730"	11/16"	1-11/16"	•	•	•
50	.0700"	11/16"	1-11/16"	•	•	•
51	.0670"	11/16"	1-11/16"	•	•	•
52	.0635"	11/16"	1-11/16"	•	•	•
53	.0595"	5/8"	1-5/8"	•	•	•
54	.0550"	5/8"	1-5/8"	•	•	•
55	.0520"	5/8"	1-5/8"	•	•	•
56	.0465"	1/2"	1-3/8"	•	•	•
57	.0430"	1/2"	1-3/8"	•	•	•
58	.0420"	1/2"	1-3/8"	•	•	•
59	.0410"	1/2"	1-3/8"	•	•	•
60	.0400"	1/2"	1-3/8"	•	•	•

Fractional Part Number (Prefix)				02-R40C	02-R40C_C	02-R40C_T
Size (Suffix)	Decimal Equiv.	Flute Length	Overall Length	H.S.S. (135° SP)	Cobalt (135° SP)	TiN Coated (135° SP)
1/16	.0625"	5/8"	1-5/8"	•	•	•
5/64	.0781"	11/16"	1-11/16"	•	•	•
3/32	.0938"	3/4"	1-3/4"	•	•	•
7/64	.1094"	13/16"	1-13/16"	•	•	•
1/8	.1250"	7/8"	1-7/8"	•	•	•
9/64	.1406"	15/16"	2-15/16"	•	•	•
5/32	.1562"	1"	2-1/16"	•	•	•
11/64	.1719"	1-1/16"	2-1/8"	•	•	•
3/16	.1875"	1-1/8"	2-3/16"	•	•	•
13/64	.2031"	1-3/16"	2-1/4"	•	•	•
7/32	.2188"	1-1/4"	2-3/8"	•	•	•
15/64	.2344"	1-5/16"	2-7/16"	•	•	•
1/4	.2500"	1-3/8"	2-1/2"	•	•	•
17/64	.2656"	1-7/16"	2-5/8"	•	•	•
9/32	.2812"	1-1/2"	2-11/16"	•	•	•
19/64	.2969"	1-9/16"	2-3/4"	•	•	•
5/16	.3125"	1-5/8"	2-13/16"	•	•	•
21/64	.3281"	1-11/16"	2-15/16"	•	•	•
11/32	.3438"	1-11/16"	3"	•	•	•
23/64	.3594"	1-3/4"	3-1/16"	•	•	•
3/8	.3750"	1-13/16"	3-1/8"	•	•	•
25/64	.3906"	1-7/8"	3-1/4"	•	•	•
13/32	.4062"	1-15/16"	3-5/16"	•	•	•
27/64	.4219"	2"	3-3/8"	•	•	•
7/16	.4375"	2-1/16"	3-7/16"	•	•	•
29/64	.4531"	2-1/8"	3-9/16"	•	•	•
15/32	.4688"	2-1/8"	3-5/8"	•	•	•
31/64	.4844"	2-3/16"	3-11/16"	•	•	•
1/2	.5000"	2-1/4"	3-3/4"	•	•	•



For Specialty Composite Drill Bits See Page 88



Chucking Reamers

High Quality Construction

- Sizing chart used for reference only, available sizes may vary, please inquire.
- Many other styles & sizes available, please inquire.



High Speed Steel			
Type	Straight Flute	Left Spiral Flute	Right Spiral Flute
Shank	Straight	Straight	Straight
Part No. (Prefix)	700	720	740

Cobalt	
Type	Straight Flute
Shank	Straight
Part No. (Prefix)	700C

Carbide Tipped				
Type	Straight Flute	Straight Flute	Expansion Flute	Expansion Flute
Shank	Straight	Taper	Straight	Taper
Part No. (Prefix)	400	402	465	467

Solid Carbide	
Type	Straight Flute
Shank	Straight
Part No. (Prefix)	1564

Size (Suffix)	Decimal Equiv.
41	.0960"
40	.0980"
2.5mm	.0984"
39	.0995"
38	.1015"
37	.1040"
36	.1065"
7/64	.1094"
35	.1100"
34	.1110"
33	.1130"
32	.1160"
3mm	.1181"
31	.1200"
1230	.1230"
1240	.1240"
1247	.1247"
1/8	.1250"
1260	.1260"
30	.1285"
29	.1360"
3.5mm	.1378"
28	.1405"
9/64	.1406"
27	.1440"
26	.1470"
25	.1495"
24	.1520"
23	.1540"
5/32	.1562"
22	.1570"
4mm	.1575"

Size (Suffix)	Decimal Equiv.
21	.1590"
20	.1610"
19	.1660"
18	.1695"
11/64	.1719"
17	.1730"
16	.1770"
4.5mm	.1772"
15	.1800"
14	.1820"
13	.1850"
1855	.1855"
1865	.1865"
1870	.1870"
3/16	.1875"
1885	.1885"
12	.1890"
11	.1910"
10	.1935"
9	.1960"
5mm	.1968"
8	.1990"
7	.2010"
13/64	.2031"
6	.2040"
5	.2055"
4	.2090"
3	.2130"
5.5mm	.2165"
7/32	.2187"
2	.2210"
1	.2280"

Size (Suffix)	Decimal Equiv.
A	.2340"
15/64	.2344"
6mm	.2362"
B	.2380"
C	.2420"
D	.2460"
2480	.2480"
2490	.2490"
2495	.2495"
1/4	.2500"
2510	.2510"
6.5mm	.2559"
F	.2570"
G	.2610"
17/64	.2656"
H	.2660"
I	.2720"
7mm	.2756"
J	.2770"
K	.2810"
9/32	.2812"
L	.2900"
M	.2950"
7.5mm	.2953"
19/64	.2969"
N	.3020"
3105	.3105"
3115	.3115"
3120	.3120"
5/16	.3125"
3135	.3135"
8mm	.3150"

Size (Suffix)	Decimal Equiv.
O	.3160"
P	.3230"
21/64	.3281"
Q	.3320"
8.5mm	.3346"
R	.3390"
11/32	.3437"
S	.3480"
9mm	.3543"
T	.3580"
23/64	.3594"
U	.3680"
3730	.3730"
3740	.3740"
9.5mm	.3740"
3745	.3745"
3/8	.3750"
3760	.3760"
V	.3770"
W	.3860"
25/64	.3906"
10mm	.3937"
X	.3970"
Y	.4040"
13/32	.4062"
Z	.4130"
10.5mm	.4134"
27/64	.4219"
11mm	.4331"
4355	.4355"
4365	.4365"
4370	.4370"

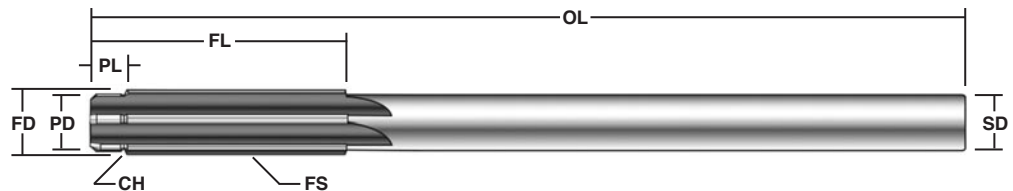
Size (Suffix)	Decimal Equiv.
7/16	.4375"
4385	.4385"
11.5mm	.4528"
29/64	.4531"
15/32	.4687"
12mm	.4724"
31/64	.4844"
12.5mm	.4921"
4980	.4980"
4990	.4990"
4995	.4995"
1/2	.5000"
5010	.5010"
13mm	.5118"
17/32	.5312"
13.5mm	.5315"
14mm	.5512"
9/16	.5625"
14.5mm	.5709"
15mm	.5906"
19/32	.5937"
15.5mm	.6102"
5/8	.6250"
16mm	.6299"
16.5mm	.6496"
21/32	.6562"
17mm	.6693"
11/16	.6875"
17.5mm	.6890"
18mm	.7087"
23/32	.7187"
18.5mm	.7283"

Size (Suffix)	Decimal Equiv.
19mm	.7480"
3/4	.7500"
19.5mm	.7677"
25/32	.7812"
20mm	.7874"
20.5mm	.8071"
13/16	.8125"
21mm	.8268"
27/32	.8437"
21.5mm	.8465"
22mm	.8661"
7/8	.8750"
22.5mm	.8858"
23mm	.9055"
29/32	.9062"
23.5mm	.9252"
15/16	.9375"
24mm	.9449"
24.5mm	.9646"
31/32	.9687"
25mm	.9843"
1	1.0000"
1-1/16	1.0625"
1-1/8	1.1250"
1-3/16	1.1875"
1-1/4	1.2500"
1-5/16	1.3125"
1-3/8	1.3750"
1-7/16	1.4375"
1-1/2	1.5000"

Key	
OL	Overall Length
FL	Flute Length
FD	Flute Diameter
FS	Flute Spiral
PL	Pilot Length
PD	Pilot Diameter
CH	Chamfer
SD	Shank Diameter

Basic Ordering Instructions:

Select desired reamer type from the charts at the top of the page (prefix) & add the desired reamer size from the sizing charts above (suffix). **Example:** To order a 1/4" straight flute, straight shank H.S.S. reamer, use part number 700-1/4. Reamers ordered this way will be pilotless with geometry conforming to NAS 897 specifications. Overall length & shank diameter will vary, please inquire.



Custom Ordering Instructions:

Use the illustration above as a starting point - specifying only the options absolutely necessary will allow the most economical prices & the quickest turnaround. Cutting or non-cutting pilots, shanks with flats & many other options also available, please inquire.

**USATCO Angle Drills**

**NEW**

*Affordable Close-Quarter Drilling Tools*



13-1227A-1



13-1227A-2



13-1227A-3

- Steel alloy cylinder & rotor for long tool life.
- Precision machined for smooth & quiet operation.
- Milled motor housing - rear exhaust.

90° Angle - 1/4" Capacity, 1/4"-28 Thread - 0.3 hp (0.22 kW)			
Part Number	Free RPM	Overall Length	Weight
13-1227A-1	3000	8-1/4" (210 mm)	1.25 lbs (0.6 kgs)

45° Angle - 1/4" Capacity, 1/4"-28 Thread - 0.3 hp (0.22 kW)			
Part Number	Free RPM	Overall Length	Weight
13-1227A-2	3000	9" (229 mm)	1.25 lbs (0.6 kgs)

360° Angle - 1/4" Capacity, 1/4"-28 Thread - 0.3 hp (0.22 kW)			
Part Number	Free RPM	Overall Length	Weight
13-1227A-3	3000	8-3/4" (222 mm)	1.25 lbs (0.6 kgs)

Note: All models air inlet 1/4" NPT.



13-1227A-1EXT



13-1227A-2EXT

*Made In The USA*

**Extension Angle Drills**

- Features an extra-long drill head perfect for inaccessible areas.

Note: Extension drills also available with 9/32"-40 thread, please inquire.

90° Extension - 1/4" Cap., 1/4"-28 Thread - 0.3 hp (0.22 kW)			
Part Number	Free RPM	Overall Length	Weight
13-1227A-1EXT	3000	13-3/8" (340 mm)	2.0 lbs (0.9 kgs)

45° Extension - 1/4" Cap., 1/4"-28 Thread - 0.3 hp (0.22 kW)			
Part Number	Free RPM	Overall Length	Weight
13-1227A-2EXT	3000	14-7/8" (378 mm)	2.0 lbs (0.9 kgs)

**Desoutter® Compact Angle Drills**



DR300-T3000-S5-90



DR300-T3000-S5-360

*High Precision, Durable Drills For Long Life*

Note: Compact lever start & 9/32"-40 thread avail., please inquire.

90° Angle - 3/16" Capacity, Collet Spindle - 0.4 hp (0.3 kW)			
Part Number	Free RPM	Overall Length	Weight
DR300-T3000-T5-90	3000	10-3/4" (273 mm)	1.4 lbs (0.6 kgs)

90° Angle - 3/16" Capacity, 1/4"-28 Thread - 0.4 hp (0.3 kW)			
Part Number	Free RPM	Overall Length	Weight
DR300-T3000-S5-90	3000	10-3/4" (273 mm)	1.4 lbs (0.6 kgs)

30° Angle - 3/16" Capacity, Collet Spindle - 0.4 hp (0.3 kW)			
Part Number	Free RPM	Overall Length	Weight
DR300-T3000-T5-30	3000	11-1/4" (286 mm)	1.4 lbs (0.6 kgs)

30° Angle - 3/16" Capacity, 1/4"-28 Thread - 0.4 hp (0.3 kW)			
Part Number	Free RPM	Overall Length	Weight
DR300-T3000-S5-30	3000	11-1/8" (283 mm)	1.4 lbs (0.6 kgs)

360° Angle - 3/16" Capacity, Collet Spindle - 0.4 hp (0.3 kW)			
Part Number	Free RPM	Overall Length	Weight
DR300-T3000-T5-360	3000	11-1/8" (283 mm)	1.5 lbs (0.7 kgs)

360° Angle - 3/16" Capacity, 1/4"-28 Thread - 0.4 hp (0.3 kW)			
Part Number	Free RPM	Overall Length	Weight
DR300-T3000-S5-360	3000	11-1/4" (286 mm)	1.5 lbs (0.7 kgs)

**Sioux® 360° Angle Drill**

*Lockable Angle Head  
Provides Full 360° Rotation*



- Lever start, rear exhaust.
- Accepts straight shank bits up to 1/4".

1/4" Capacity - 0.75 hp (0.56 kW)			
Part Number	Free RPM	Overall Length	Weight
2L1380	3350	13-3/4" (349 mm)	2.3 lbs (1.1 kgs)

**Dotco® Angle Drills**

*Comfortable Textured Grip*



15LF283-62

- Vibration & noise reducing ergonomic design.
- Thermal insulated handle.

Composite Housing, 1/4" Cap., 1/4"-28 Thread - 0.4 hp (0.30 kW)			
Part Number* Rear Exhaust	Free RPM	Overall Length	Weight
15LF281-62	5300	10.0" (254 mm)	1.5 lbs (0.7 kgs)
15LF282-62	4000	10.0" (254 mm)	1.5 lbs (0.7 kgs)
15LF283-62	3300	10.0" (254 mm)	1.5 lbs (0.7 kgs)
15LF284-62	2400	10.4" (264 mm)	1.7 lbs (0.8 kgs)
15LF285-62	1000	11.1" (282 mm)	1.8 lbs (0.8 kgs)
15LF286-62	750	11.1" (282 mm)	1.8 lbs (0.8 kgs)
15LF287-62	600	11.1" (282 mm)	1.8 lbs (0.8 kgs)

'600' Mini Angle Head	
Suffix	Spindle Thd.
-61	10-32
-62 (standard)	1/4"-28
-63	9/32"-40
-64	5/16"-24

360° Mini Angle Head	
Suffix	Spindle Thd.
-91	10-32
-92	1/4"-28
-93	9/32"-40
-94	5/16"-24

45° Mini Angle Head	
Suffix	Spindle Thd.
-41	10-32
-42	1/4"-28
-43	9/32"-40
-44	5/16"-24

'700' Compact Angle Head	
Suffix	Spindle Thd.
-71	10-32
-72	1/4"-28
-73	9/32"-40
-74	5/16"-24

\* Standard equipment is the 600 Series Mini Angle Head with 1/4"-28 internal thread (-62). To order other head types/sizes please select from the charts above the correct suffix required. **Example:** For a 360° Mini Angle Head with a 10-32 internal thread at 5300 RPM, the part number would be 15LF281-91 instead of 15LF281-62 (standard).

**Dynabrade® Vacuum Angle Drill**

**NEW**

*No F.O.D.*



- Collapsible vacuum shroud compresses around drill bit to effectively capture chips and debris.
- Low-profile head allows access to limited access areas.
- 6' vacuum hose with 1" port connects to central vacuum system.

1/4" Capacity, 1/4"-28 Thread - 0.4 hp (0.30 kW)			
Part Number	Free RPM	Overall Length	Weight
53135	3200	11-3/4" (276 mm)	2.0 lbs (0.9 kgs)

**Dotco® Heavy-Duty Angle Drills**

*Comfortable Textured Grip*



15LN288-52

- Great tool for tough jobs not suitable for lighter models.
- Extra powerful motor & sturdy angle head.
- Vibration & noise reducing ergonomic design.
- Thermal insulated handle.

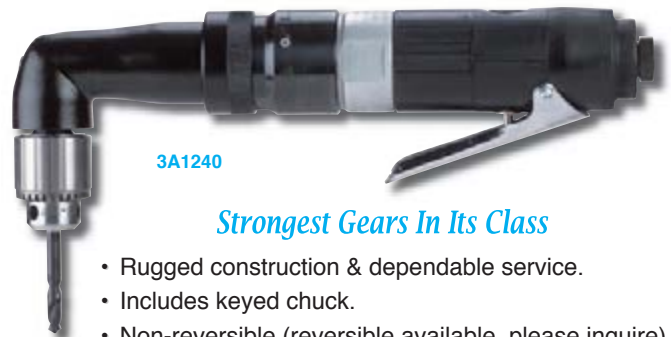
Composite Housing, 1/4" Cap., 1/4"-28 Thread - 0.4 hp (0.30 kW)			
Part Number* Rear Exhaust	Free RPM	Overall Length	Weight
15LN288-52	3900	11.5" (292 mm)	2.5 lbs (1.1 kgs)
15LN281-52	3500	11.5" (292 mm)	2.5 lbs (1.1 kgs)
15LN282-52	2170	11.5" (292 mm)	2.5 lbs (1.1 kgs)
15LN283-52	1300	11.5" (292 mm)	2.5 lbs (1.1 kgs)
15LN284-52	1070	12.8" (325 mm)	2.9 lbs (1.3 kgs)
15LN285-52	870	12.8" (325 mm)	2.9 lbs (1.3 kgs)
15LN286-52	540	12.8" (325 mm)	2.9 lbs (1.3 kgs)

'500' Heavy-Duty Angle Head	
Suffix	Spindle Thd.
-51	10-32
-52 (standard)	1/4"-28
-53	9/32"-40
-54	5/16"-24

'500' Heavy-Duty Angle Head	
Suffix	Spindle Thd.
-55	3/8"-24
-59	3-Jaw Chuck
-59NC	3/8"-24 Male

\* Standard equipment is the 500 Series Heavy-Duty Angle Head with 1/4"-28 internal thread (-52). To order other head types/sizes please select from the charts above the correct suffix required. **Example:** For a Heavy-Duty Angle Head with a 10-32 internal thread at 3900 RPM, the part number would be 15LN288-51 instead of 15LN288-52 (standard).

**Sioux® Heavy-Duty Angle Drills**



3A1240

*Strongest Gears In Its Class*

- Rugged construction & dependable service.
- Includes keyed chuck.
- Non-reversible (reversible available, please inquire).

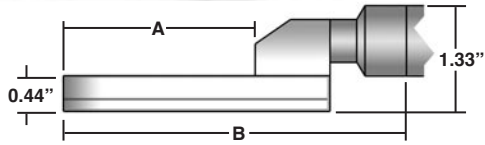
1/4" Cap. Chuck, 3/8"-24 Thread - 1.0 hp (0.75 kW) - Rear Exhaust			
Part Number	Free RPM	Overall Length	Weight
SDR10A22N2	2200	10.2" (260 mm)	2.9 lbs (1.3 kgs)

1/2" Cap. Chuck, 1/2"-20 Thread - 1.0 hp (0.75 kW) - Side Exhaust			
Part Number	Free RPM	Overall Length	Weight
3A1240	600	15-1/8" (384 mm)	6.5 lbs (2.9 kgs)

**USATCO Offset 'Pancake' Angle Air Drills**

**NEW**

*Smooth, Quiet Operation*



Steel alloy cylinder & rotor, precision milled motor housing.

90° Angle - 1/4" Capacity, 1/4"-28 Thread - 0.3 hp (0.22 kW)					
Part Number	Free RPM	Clearance (A)	Offset Length (B)	Overall Length	Weight
13-1627	3000	2.44"	4.81"	11" (279 mm)	2.0 lbs (0.91 kgs)
13-1629	3000	3.79"	6.16"	12.35" (314 mm)	2.1 lbs (0.95 kgs)
13-1631	3000	5.13"	7.50"	13.69" (348 mm)	2.3 lbs (1.04 kgs)

**Economy Angle Drills**



13-9750



13-9751

*Affordable Close Quarter Drilling Tools*

90° Angle - 1/4" Capacity, 1/4"-28 Thread - 0.3 hp (0.22 kW)			
Part Number	Free RPM	Overall Length	Weight
13-9750	2800	10-1/2" (267 mm)	1.6 lbs (0.7 kgs)

45° Angle - 1/4" Capacity, 1/4"-28 Thread - 0.3 hp (0.22 kW)			
Part Number	Free RPM	Overall Length	Weight
13-9751	2800	11" (279 mm)	1.6 lbs (0.7 kgs)

**Extended Reach Economy Angle Drill**

**NEW**

*Extra Length For Tight Areas*



90° Extended - 1/4" Capacity, 1/4"-28 Thread - 0.3 hp (0.22 kW)			
Part Number	Free RPM	Overall Length	Weight
13-9752	2800	13-1/4" (337 mm)	1.8 lbs (0.8 kgs)

**Angle Drill Upgrade Kit**



**Kit Includes:**

Four Adapter Drills (#10, #21, #30 & #40), Four Collet Chucks (#10, #21, #30 & #40), Cone Jaw Chuck & Wrench

Part Number	Description
53-99757	Complete 10 PC Kit

**Cone-Jaw Chuck With Wrench**

- Light-duty tool fits most angle drills with female thread.
- Use standard drills with any threaded spindle tool.



Part Number	Capacity	Thread
53-M3	1/16" to 1/4"	1/4"-28

**USATCO Collet Chucks**

*1/4"-28 Thread*



Integral units hold one size only, sub adapter not required.

Part Number	Size	Part Number	Size
20-4010	#10	20-4013	3/32"
20-4011	#11	20-4014	1/8"
20-4020	#20	20-4015	5/32"
20-4021	#21	20-4016	3/16"
20-4027	#27	20-4018	1/4"
20-4030	#30	20-41516	5/16"
20-4040	#40	20-41318	3/8"
20-4257	F		

4 PC Collet Chuck Kit	
Part Number	Sizes Included
53-92964	#10, #21, #30 & #40

**Collets**

- For use on all 9/32"-40 internal thread drills.
- Suitable for Desoutter & Atlas Copco drills.



Wire Gauge Sizes		
Part No.	Size	Decimal
AD040	60	.0400"
AD041	59	.0410"
AD042	58	.0420"
AD043	57	.0430"
AD0465	56	.0465"
AD052	55	.0520"
AD055	54	.0550"
AD0595	53	.0595"
AD0635	52	.0635"
AD067	51	.0670"
AD070	50	.0700"
AD073	49	.0730"
AD076	48	.0760"
AD0785	47	.0785"
AD081	46	.0810"
AD082	45	.0820"
AD086	44	.0860"
AD089	43	.0890"
AD0935	42	.0935"
AD096	41	.0960"
AD098	40	.0980"
AD0995	39	.0995"
AD1015	38	.1015"
AD1040	37	.1040"
AD1065	36	.1065"
AD110	35	.1100"

Wire Gauge Sizes		
Part No.	Size	Decimal
AD111	34	.1110"
AD113	33	.1130"
AD116	32	.1160"
AD120	31	.1200"
AD1285	30	.1285"
AD136	29	.1360"
AD1405	28	.1405"
AD144	27	.1440"
AD147	26	.1470"
AD1495	25	.1495"
AD152	24	.1520"
AD154	23	.1540"
AD157	22	.1570"
AD159	21	.1590"
AD161	20	.1610"
AD166	19	.1660"
AD1695	18	.1695"
AD1730	17	.1730"
AD177	16	.1770"
AD180	15	.1800"
AD182	14	.1820"
AD185	13	.1850"
AD189	12	.1890"
AD191	11	.1910"
AD1935	10	.1935"
AD1960	9	.1960"

Metric Sizes		
Part No.	Size	Decimal
AD0315	0.8	.0315"
AD0354	0.9	.0354"
AD0394	1.0	.0394"
AD0433	1.1	.0433"
AD0472	1.2	.0472"
AD0512	1.3	.0512"
AD0551	1.4	.0551"
AD0591	1.5	.0591"
AD0630	1.6	.0630"
AD0669	1.7	.0669"
AD0709	1.8	.0709"
AD0748	1.9	.0748"
AD0787	2.0	.0787"
AD0827	2.1	.0827"
AD0866	2.2	.0866"
AD0906	2.3	.0906"
AD0945	2.4	.0945"
AD0984	2.5	.0984"
AD1024	2.6	.1024"
AD1063	2.7	.1063"
AD1102	2.8	.1102"
AD1142	2.9	.1142"
AD1181	3.0	.1181"
AD1220	3.1	.1220"
AD1260	3.2	.1260"
AD1299	3.3	.1299"
AD1339	3.4	.1339"
AD1378	3.5	.1378"
AD1417	3.6	.1417"

Metric Sizes		
Part No.	Size	Decimal
AD1457	3.7	.1457"
AD1496	3.8	.1496"
AD1535	3.9	.1535"
AD1575	4.0	.1575"
AD1614	4.1	.1614"
AD1654	4.2	.1654"
AD1693	4.3	.1693"
AD1732	4.4	.1732"
AD1772	4.5	.1772"
AD1811	4.6	.1811"
AD1850	4.7	.1850"
AD1890	4.8	.1890"
AD1929	4.9	.1929"
AD1969	5.0	.1969"

Fractional Sizes		
Part No.	Size	Decimal
AD0312	1/32"	.0312"
AD0469	3/64"	.0469"
AD0625	1/16"	.0625"
AD0781	5/64"	.0781"
AD0937	3/32"	.0937"
AD1094	7/64"	.1094"
AD125	1/8"	.1250"
AD1406	9/64"	.1406"
AD1562	5/32"	.1562"
AD1719	11/64"	.1719"
AD1875	3/16"	.1875"

**H.S.S. Threaded Shank Reamers**



- 1/4"-28 shank thread.
- No pilot.

Part Number	Diameter	Decimal Equiv.	Overall Length
02-96503	#10	.1935"	5/8" (16 mm)
02-96502	#13	.1850"	5/8" (16 mm)
02-96501	#21	.1590"	5/8" (16 mm)
02-96499	#30	.1285"	5/8" (16 mm)
02-96505	1/4"	.2500"	5/8" (16 mm)
02-96567	#10	.1935"	1" (25.4 mm)
02-96566	#13	.1850"	1" (25.4 mm)
02-96565	#21	.1590"	1" (25.4 mm)
02-96564	#30	.1285"	1" (25.4 mm)
02-96568	1/4"	.2500"	1" (25.4 mm)

**Threaded Shank 'Rosebud' Countersink Cutters**



For angle drills, drill attachments & similar threaded shank tools.

1/4"-28 Shank Thread, 100° Cutting Angle	
Part Number	Diameter
02-94000	3/8"
02-94001	1/2"
02-94002	5/8"

**Threaded Shank Adapter Drills**

**High Speed Steel Adapter Drills**

Drills are manufactured to NAS 965 Type 'B' construction with 135° split points. Great for drilling general to medium duty, low tensile strength materials in confined areas.

**Cobalt Adapter Drills**

Drills are manufactured to NAS 965 Type 'D' construction with 135° heavy duty split points and surface treated. Made from M42 8% cobalt high speed steel. Great for drilling hard, tough high tensile strength materials in confined areas. When drilling low tensile strength materials these drills will have a significantly greater tool life than standard H.S.S., resulting in a much lower cost per drill.



*10-32 Thread Drills On Next Page*

**Note:** Carbide drills, PCD drills, & custom drill sizes also available, please inquire.

Adapter Drills, 1/4"-28 Shank Thread							
Drill Size	Decimal Equivalent	H.S.S. Stubby 3/4" OAL	H.S.S. Short 1-1/4" OAL	H.S.S. Long 2-1/8" OAL	Cobalt Stubby 3/4" OAL	Cobalt Short 1-1/4" OAL	Cobalt Long 2-1/8" OAL
2.3 mm	.0906"	02-2924-2.3	02-2964-2.3	02-2974-2.3	02-2924-2.3C	02-2964-2.3C	02-2974-2.3C
3/32"	.0938"	02-2921-3/32	02-2961-3/32	02-2971-3/32	02-2921-3/32C	02-2961-3/32C	02-2971-3/32C
40	.0980"	02-2922-40	02-2962-40	02-2972-40	02-2922-40C	02-2962-40C	02-2972-40C
3.17 mm	.1248"	02-2924-3.17	02-2964-3.17	02-2974-3.17	02-2924-3.17C	02-2964-3.17C	02-2974-3.17C
1/8"	.1250"	02-2921-1/8	02-2961-1/8	02-2971-1/8	02-2921-1/8C	02-2961-1/8C	02-2971-1/8C
30	.1285"	02-2922-30	02-2962-30	02-2972-30	02-2922-30C	02-2962-30C	02-2972-30C
27	.1440"	02-2922-27	02-2962-27	02-2972-27	02-2922-27C	02-2962-27C	02-2972-27C
3.96 mm	.1559"	02-2924-3.96	02-2964-3.96	02-2974-3.96	02-2924-3.96C	02-2964-3.96C	02-2974-3.96C
5/32"	.1562"	02-2921-5/32	02-2961-5/32	02-2971-5/32	02-2921-5/32C	02-2961-5/32C	02-2971-5/32C
21	.1590"	02-2922-21	02-2962-21	02-2972-21	02-2922-21C	02-2962-21C	02-2972-21C
20	.1610"	02-2922-20	02-2962-20	02-2972-20	02-2922-20C	02-2962-20C	02-2972-20C
16	.1770"	02-2922-16	02-2962-16	02-2972-16	02-2922-16C	02-2962-16C	02-2972-16C
4.76 mm	.1874"	02-2924-4.76	02-2964-4.76	02-2974-4.76	02-2924-4.76C	02-2964-4.76C	02-2974-4.76C
3/16"	.1875"	02-2921-3/16	02-2961-3/16	02-2971-3/16	02-2921-3/16C	02-2961-3/16C	02-2971-3/16C
11	.1910"	02-2922-11	02-2962-11	02-2972-11	02-2922-11C	02-2962-11C	02-2972-11C
10	.1935"	02-2922-10	02-2962-10	02-2972-10	02-2922-10C	02-2962-10C	02-2972-10C
3	.2130"	02-2922-3	02-2962-3	02-2972-3	02-2922-3C	02-2962-3C	02-2972-3C
7/32"	.2188"	02-2921-7/32	02-2961-7/32	02-2971-7/32	02-2921-7/32C	02-2961-7/32C	02-2971-7/32C
D	.2460"	02-2923-D	02-2963-D	02-2973-D	02-2923-DC	02-2963-DC	02-2973-DC
1/4"	.2500"	02-2921-1/4	02-2961-1/4	02-2971-1/4	02-2921-1/4C	02-2961-1/4C	02-2971-1/4C
6.35 mm	.2500"	02-2924-6.35	02-2964-6.35	02-2974-6.35	02-2924-6.35C	02-2964-6.35C	02-2974-6.35C
F	.2570"	02-2923-F	02-2963-F	02-2973-F	02-2923-FC	02-2963-FC	02-2973-FC
G	.2610"	02-2923-G	02-2963-G	02-2973-G	02-2923-GC	02-2963-GC	02-2973-GC
17/64"	.2656"	02-2921-17/64	02-2961-17/64	02-2971-17/64	02-2921-17/64C	02-2961-17/64C	02-2971-17/64C
J	.2770"	02-2923-J	02-2963-J	02-2973-J	02-2923-JC	02-2963-JC	02-2973-JC
9/32"	.2812"	02-2921-9/32	02-2961-9/32	02-2971-9/32	02-2921-9/32C	02-2961-9/32C	02-2971-9/32C
5/16"	.3125"	02-2921-5/16	02-2961-5/16	02-2971-5/16	02-2921-5/16C	02-2961-5/16C	02-2971-5/16C
8 mm	.3150"	02-2924-8	02-2964-8	02-2974-8	02-2924-8C	02-2964-8C	02-2974-8C
3/8"	.3750"	02-2921-3/8	02-2961-3/8	02-2971-3/8	02-2921-3/8C	02-2961-3/8C	02-2971-3/8C

**Threaded Shank Adapter Drills (cont'd)**

Adapter Drills, 10-32 Shank Thread							
Drill Size	Decimal Equivalent	H.S.S. Stubby 3/4" OAL	H.S.S. Short 1-1/4" OAL	H.S.S. Long 2-1/8" OAL	Cobalt Stubby 3/4" OAL	Cobalt Short 1-1/4" OAL	Cobalt Long 2-1/8" OAL
3/32"	.0938"	02-2621-3/32	02-2941-3/32	02-2951-3/32	02-2621-3/32C	02-2941-3/32C	02-2951-3/32C
40	.0980"	02-2622-40	02-2942-40	02-2952-40	02-2622-40C	02-2942-40C	02-2952-40C
1/8"	.1250"	02-2621-1/8	02-2941-1/8	02-2951-1/8	02-2621-1/8C	02-2941-1/8C	02-2951-1/8C
30	.1285"	02-2622-30	02-2942-30	02-2952-30	02-2622-30C	02-2942-30C	02-2952-30C
27	.1440"	02-2622-27	02-2942-27	02-2952-27	02-2622-27C	02-2942-27C	02-2952-27C
5/32"	.1562"	02-2621-5/32	02-2941-5/32	02-2951-5/32	02-2621-5/32C	02-2941-5/32C	02-2951-5/32C
21	.1590"	02-2622-21	02-2942-21	02-2952-21	02-2622-21C	02-2942-21C	02-2952-21C
20	.1610"	02-2622-20	02-2942-20	02-2952-20	02-2622-20C	02-2942-20C	02-2952-20C
16	.1770"	02-2622-16	02-2942-16	02-2952-16	02-2622-16C	02-2942-16C	02-2952-16C
3/16"	.1875"	02-2621-3/16	02-2941-3/16	02-2951-3/16	02-2621-3/16C	02-2941-3/16C	02-2951-3/16C
11	.1910"	02-2622-11	02-2942-11	02-2952-11	02-2622-11C	02-2942-11C	02-2952-11C
10	.1935"	02-2622-10	02-2942-10	02-2952-10	02-2622-10C	02-2942-10C	02-2952-10C
3	.2130"	02-2622-3	02-2942-3	02-2952-3	02-2622-3C	02-2942-3C	02-2952-3C
7/32"	.2188"	02-2621-7/32	02-2941-7/32	02-2951-7/32	02-2621-7/32C	02-2941-7/32C	02-2951-7/32C
1/4"	.2500"	02-2621-1/4	02-2941-1/4	02-2951-1/4	02-2621-1/4C	02-2941-1/4C	02-2951-1/4C
17/64"	.2656"	02-2621-17/64	02-2941-17/64	—	—	—	—
9/32"	.2812"	02-2621-9/32	02-2941-9/32	—	—	—	—
5/16"	.3125"	02-2621-5/16	02-2941-5/16	02-2951-5/16	02-2621-5/16C	—	—
3/8"	.3750"	—	—	02-2951-3/8	02-2621-3/8C	—	—

**Threaded Shank Adapter Drill Sets**

*1/4"-28  
Threaded  
Shank*



53-2971

Stubby 4 PC Sets	
Part Number	Included Sizes (1 each)
53-2921	3/32", 1/8", 5/32" & 3/16"
53-2922	#10, #21, #30 & #40

Short 4 PC Sets	
Part Number	Included Sizes (1 each)
53-2961	3/32", 1/8", 5/32" & 3/16"
53-2962	#10, #21, #30 & #40

Long 4 PC Sets	
Part Number	Included Sizes (1 each)
53-2971	3/32", 1/8", 5/32" & 3/16"
53-2972	#10, #21, #30 & #40

**Threaded Shank Countersink Extensions**

**NEW**



- Versatile - for use with countersinks, drill bits etc.
- 1/4"-28 threaded shank & 1/4"-28 female thread.

Part Number	Body Length	Body Dia.	Shank Length
90442	1" (25.4 mm)	3/8"	5/16"
90443	2" (50.8 mm)		
90444	4" (101.6 mm)		

**Threaded Shank Adapters**



Part Number	Converts
20-90409	1/4"-28 Male Thread To 9/32"-40 Female Thread
20-90411	9/32"-40 Male Thread To 1/4"-28 Female Thread
20-90413	1/4"-28 Male Thread To 10-32 Female Thread

## Drill Gauges

*Conforms To Gov't Spec GG-G86b*

- Made of heavy gauge steel, machined & ground to close tolerances.
- Text of hole sizes & decimal equivalents permanently etched into face for long life.

18-14E



Part No.	Drill Types & Sizes
18-12	Letter Size Drills (A to Z)
18-13	Number Size Drills (61 to 80) & (3" to 1-1/8")
18-14	Fractional Size Drills (1/16" to 1/2" x 64ths)
18-14E	Same As Above, Easy Read Type
18-15	Number Size Drills (1 to 60)
18-15E	Same As Above, Easy Read Type
18-35	Metric Size Drills (to 13 mm x .05 mm)

## Chip Chasers



04-100



04-200

Easily remove chips between sheets after drilling rivet holes.

Part Number	Blade Length
04-100	2-3/4"
04-200	5-7/8"

## Strap Duplicator Sets



Part Number	Type	Includes (1 each):
53-70369	Bushing, 6-1/4" Reach	46-231-1, 2, 3 & 5
53-70370	Bushing, 13-1/4" Reach	46-231-21, 22, 23 & 25
53-70371	Inverted, 6-1/4" Reach	46-232-1, 2, 3 & 5
53-70372	Inverted, 13-1/4" Reach	46-232-21, 22, 23 & 25

## Strap Duplicators

Tapered back end is convenient for prying apart sheets.



Punch Type

Punch Type (marks sheet from hidden pilot hole)		
Part Number 6-1/4" Reach ('L')	Part Number 13-1/4" Reach ('L')	Drill Size & Pilot Diameter
46-230-1	46-230-21	#40
46-230-2	46-230-22	#30
46-230-3	46-230-23	#21
46-230-4	46-230-24	#19
46-230-5	46-230-25	#10
46-230-6	46-230-26	#5
46-230-7	46-230-27	1/4"
46-230-8	46-230-28	F



Bushing Type

Bushing Type (with jig, drill duplicate holes from overlapping sheet)		
Part Number 6-1/4" Reach ('L')	Part Number 13-1/4" Reach ('L')	Drill Size & Pilot Diameter
46-231-1	46-231-21	#40
46-231-2	46-231-22	#30
46-231-3	46-231-23	#21
46-231-4	46-231-24	#19
46-231-5	46-231-25	#10
46-231-6	46-231-26	#5
46-231-7	46-231-27	1/4"
46-231-8	46-231-28	F



Bushing Inverted  
Pilot Type

Bushing Inverted Pilot Type (bushing type with inverted pilot)		
Part Number 6-1/4" Reach ('L')	Part Number 13-1/4" Reach ('L')	Drill Size & Pilot Diameter
46-232-1	46-232-21	#40
46-232-2	46-232-22	#30
46-232-3	46-232-23	#21
46-232-4	46-232-24	#19
46-232-5	46-232-25	#10
46-232-6	46-232-26	#5
46-232-7	46-232-27	1/4"
46-232-8	46-232-28	F



**Rivet Fan Spacing Tools**

*Unequalled  
For Accuracy*

*Save Lots  
Of Time*



46-051



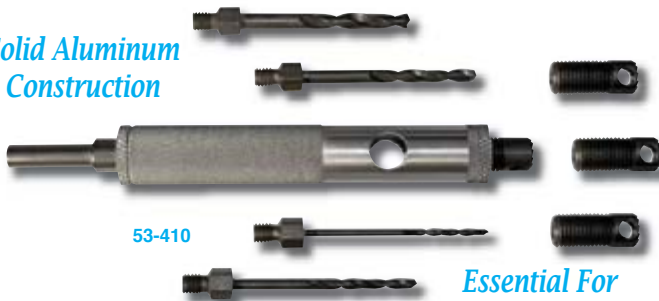
46-081

- Used for layout & marking of equally spaced rivet holes.
- Hole spacing from 1/2" (13 mm) closed to 2" (51 mm) open.

Part Number	Type	Fingers	Open Length
46-081	Standard	20	38" (97 cm)
46-051	Mini	10	18" (46 cm)

**USATCO Rivet Removal Tools**

*Solid Aluminum  
Construction*



53-410

*Essential For  
Repair Work*

Adjustable drill-out assembly limits penetration to rivet, not beyond.

Standard Rivet Removal Tool	
Part Number	Description
53-400	Tool, Guides & 4 Bits (#10, #21, #30 & #40)

**Blind Rivet Removal Tool**

- Serrated end cup prevents slippage while drilling rivets.
- For POP, Adel, Cherry blind rivets etc.
- Not for use with steel stemmed blind rivets.

Blind Rivet Removal Tool	
Part Number	Description
53-410	Tool, Guides & 4 Bits (3/32", 1/8", 5/32" & 3/16")

Replacement Bits	
Part Number	Description
02-2972-10	#10
02-2972-21	#21
02-2972-30	#30
02-2972-40	#40

Replacement Bits	
Part Number	Description
02-2971-3/32	3/32"
02-2971-1/8	1/8"
02-2971-5/32	5/32"
02-2971-3/16	3/16"

**Drill Stands & Bushings**

*Interchangeable &  
Hardened Bushings*



18-3212A

18-3212B

- Keeps your drills & taps perpendicular to work surface.
- No-mar transparent plastic allows a clear view of the work.

Drill Stands (order bushings below)			
Part Number	Type	Thread	Height*
18-3212A	Standard	1/2"-13	1-5/8"
18-3212B	Low-Profile	1/2"-13	1-1/8"
18-3215A	Large Diameter	3/4"-16	1-3/4"

1/2"-13 Thread Bushings	
Part Number	Drill Size
18-1213-40	#40
18-1213-3/32	3/32"
18-1213-30	#30
18-1213-1/8	1/8"
18-1213-21	#21
18-1213-5/32	5/32"
18-1213-10	#10
18-1213-3/16	3/16"
18-1213-7/32	7/32"
18-1213-1/4	1/4"

3/4"-16 Thread Bushings	
Part Number	Drill Size
18-1215-9/32	9/32"
18-1215-5/16	5/16"
18-1215-11/32	11/32"
18-1215-3/8	3/8"
18-1215-7/16	7/16"
18-1215-1/2	1/2"

\* Height of low-profile stand less bushing.

**Drill Stand Kit**

*New Fitted Case Helps Prevent F.O.D.*

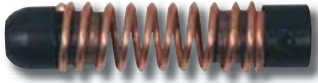


**Kit Includes:**

Three Housings, Nine Bushings (#40, #30, #21, #10, 5/32", 3/16", 7/32", 1/4" & F) & Fitted Plastic Case

Part Number	Description
53-590DBK	Complete 13 PC Kit

## Drill Stops



- Prevents work damage from uncontrolled drill breakthru.
- Positive stop, spring cushioned contact.

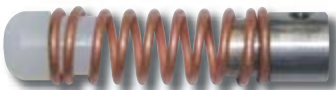
Part Number	Drill Size	Overall Length
18-DS-50	#50	1-5/16" (33 mm)
18-DS-41	#41	1-5/16" (33 mm)
18-DS-40	#40	1-5/16" (33 mm)
18-DS-30	#30	1-5/16" (33 mm)
18-DS-28	#28	1-5/16" (33 mm)
18-DS-27	#27	1-5/16" (33 mm)
18-DS-21	#21	1-1/2" (38 mm)
18-DS-20	#20	1-1/2" (38 mm)
18-DS-17	#17	1-1/2" (38 mm)
18-DS-16	#16	1-1/2" (38 mm)
18-DS-12	#12	1-1/2" (38 mm)
18-DS-11	#11	1-1/2" (38 mm)
18-DS-10	#10	1-1/2" (38 mm)
18-DS-6	#6	1-1/2" (38 mm)
18-DS-1	#1	1-1/2" (38 mm)
18-DS-1/4	1/4"	2-1/8" (54 mm)
18-DS-5/16	5/16"	2-1/8" (54 mm)
18-DS-7/32	7/32"	2-1/8" (54 mm)
18-DS-9/32	9/32"	2-1/8" (54 mm)
18-DS-3/8	3/8"	2-1/8" (54 mm)
18-DS-7/16	7/16"	2-1/8" (54 mm)

### Drill Stop 4 PC Set

Part Number	Included Sizes (1 each)
53-1234	#10, #21, #30, #40

## No-Mar Drill Stops

**NEW**



- Unique rounded face eliminates surface marring.
- Color coded, locks in drill with two set screws.

Part Number	Color	Drill Size
18-DS-40NM	Zinc	#40
18-DS-30NM	Copper	#30
18-DS-21NM	Black	#21
18-DS-20NM	Zinc	#20
18-DS-10NM	Brass	#10
18-DS-1/4NM	Copper	1/4"

## Ultralite® Nutplate Air Drill

Fully Adjustable  
Feed Rate



Lightweight  
Design

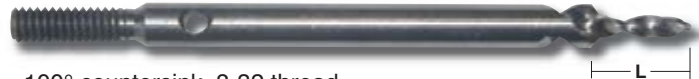
Many Tooling Options Available, For  
Ordering & Pricing Info Please Inquire

- Only one hand required to locate, drill & countersink both holes.
- Easily convert rivet spacings with interchangeable foot attachments.
- Available in single wing, double wing & mickey mouse models.
- Accommodates all nutplate spindle spacings from 0.219" to 1.125".
- Available in both 600 & 7000 RPM models (please specify).

### Specifications

Stroke Length	1/2"
Spindle Speed	600 to 7000 RPM
Collet Stroke Length	1/4"
Horsepower	0.54
Feed Rate Change	0.001" - 0.012" Per Revolution
Weight	4.75 lbs (2.2 kgs)

## H.S.S. Nut Plate Drill Bits



- 100° countersink, 8-32 thread.
- Cobalt nut plate drill bits also available, please inquire.

### 'L' Dim. = 0.295"

Part Number	Countersink Dia.	Drill Diameter
40-100-25-8	.187"	.0980"
S40-100-25-8	.250"	.0980"
30-100-25-8	.250"	.1285"

### 'L' Dim. = 0.420"

Part Number	Countersink Dia.	Drill Diameter
40-100-35-8	.187"	.0980"
S40-100-35-8	.250"	.0980"
30-100-35-8	.250"	.1285"

### 'L' Dim. = 0.560"

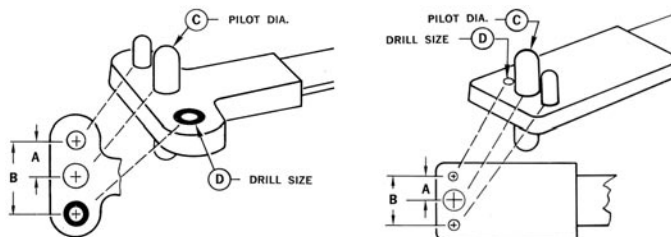
Part Number	Countersink Dia.	Drill Diameter
40-100-50-8	.187"	.0980"
S40-100-50-8	.250"	.0980"
30-100-50-8	.250"	.1285"

Nut Plate Drill Jigs



04-518-ND

- Designed for accurate drilling of rivet holes for nut plates.
- Flexible handle provides hand clearance when jig is in use.

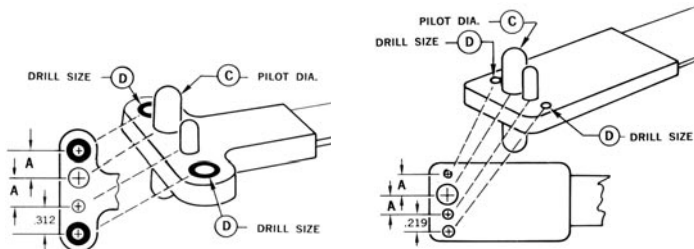


Two Lug Type Style 1

Two Lug Type Style 2

Two Lug Type Style 1					
Part No.	Bolt Ref.	'A' Dim.	'B' Dim.	Pilot Dia.	Drill Size
04-518-A	#6	.344"	.688"	.139"	#40
04-518-B	#8	.344"	.688"	.164"	#40
04-518-C	#10	.344"	.688"	.191"	#40
04-518-D	1/4"	.500"	1.000"	.248"	#40
04-518-E	5/16"	.500"	1.000"	.312"	#30
04-518-F	3/8"	.500"	1.000"	.372"	#30
04-518-M	—	.375"	.750"	.4375"	#40
04-518-N	—	.500"	1.000"	.6875"	#30
04-518-P	—	.6875"	1.375"	.811"	#30

Two Lug Type Style 2					
Part No.	Bolt Ref.	'A' Dim.	'B' Dim.	Pilot Dia.	Drill Size
04-518-NA	#4	.203"	.406"	.112"	#40
04-518-NB	#6	.218"	.436"	.139"	#40
04-518-NC	#8	.234"	.468"	.164"	#40
04-518-ND	#10	.250"	.500"	.191"	#40
04-518-NE	1/4"	.281"	.562"	.248"	#40
04-518-NF	5/16"	.3125"	.625"	.312"	#30



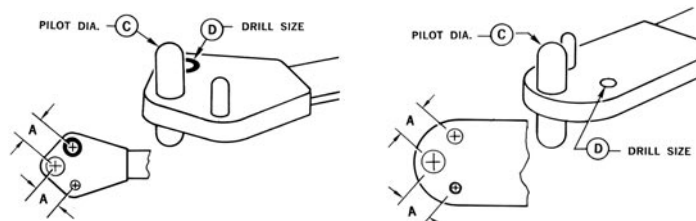
One Lug Type Style 1

One Lug Type Style 2

One Lug Type Style 1				
Part No.	Bolt Ref.	'A' Dim.	Pilot Dia.	Drill Size
04-518-G	#6	.344"	.139"	#40
04-518-H	#8	.344"	.164"	#40
04-518-J	#10	.344"	.191"	#40
04-518-K	1/4"	.344"	.248"	#40
04-518-L	#10 Sp.	.344"	.213"	#40

One Lug Type Style 2				
Part No.	Bolt Ref.	'A' Dim.	Pilot Dia.	Drill Size
04-518-PA	#4	.203"	.112"	#40
04-518-PB	#6	.218"	.139"	#40
04-518-PC	#8	.234"	.164"	#40
04-518-PD	#10	.250"	.191"	#40
04-518-PE	1/4"	.281"	.248"	#40

Nut Plate Drill Jigs (cont'd)

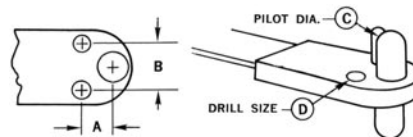


Corner Lug Type Style 1

Corner Lug Type Style 2

Corner Type Style 1				
Part No.	Bolt Ref.	'A' Dim.	Pilot Dia.	Drill Size
04-518-R	#6	.344"	.139"	#40
04-518-S	#8	.344"	.164"	#40
04-518-T	#10	.344"	.191"	#40
04-518-U	1/4"	.500"	.248"	#40
04-518-V	5/16"	.500"	.312"	#30

Corner Type Style 2				
Part No.	Bolt Ref.	'A' Dim.	Pilot Dia.	Drill Size
04-518-SA	#4	.203"	.112"	#40
04-518-SB	#6	.218"	.139"	#40
04-518-SC	#8	.234"	.164"	#40
04-518-SD	#10	.250"	.191"	#40
04-518-SE	1/4"	.281"	.248"	#40



Mini Anchornut Type					
Part No.	Bolt Ref.	'A' Dim.	'B' Dim.	Pilot Dia.	Drill Size
04-518-TA	#10	.250"	.219"	.191"	#40
04-518-TB	1/4"	.281"	.219"	.248"	#40
04-518-TC	5/16"	.312"	.250"	.312"	#30

Tube Drilling Jig

No Clamping Necessary

- For drilling tubes & other round stock.
- Bolts to drill press table.
- Grooved & angled sides hold work in place.



Part Number	Description
70189	Tube Drilling Jig

Drill Rite™ Precision Drill Guide

- Allows hand drills to perform like a professional drill press.
- High quality aircraft grade aluminum construction.
- 3/16" & 1/4" drill bushings included with tool.



Note: Other hardened drill bushings avail., please inquire.

Part Number	Capacity (pipe or round stock)
70400	1/2" to 2-1/2" Diameter